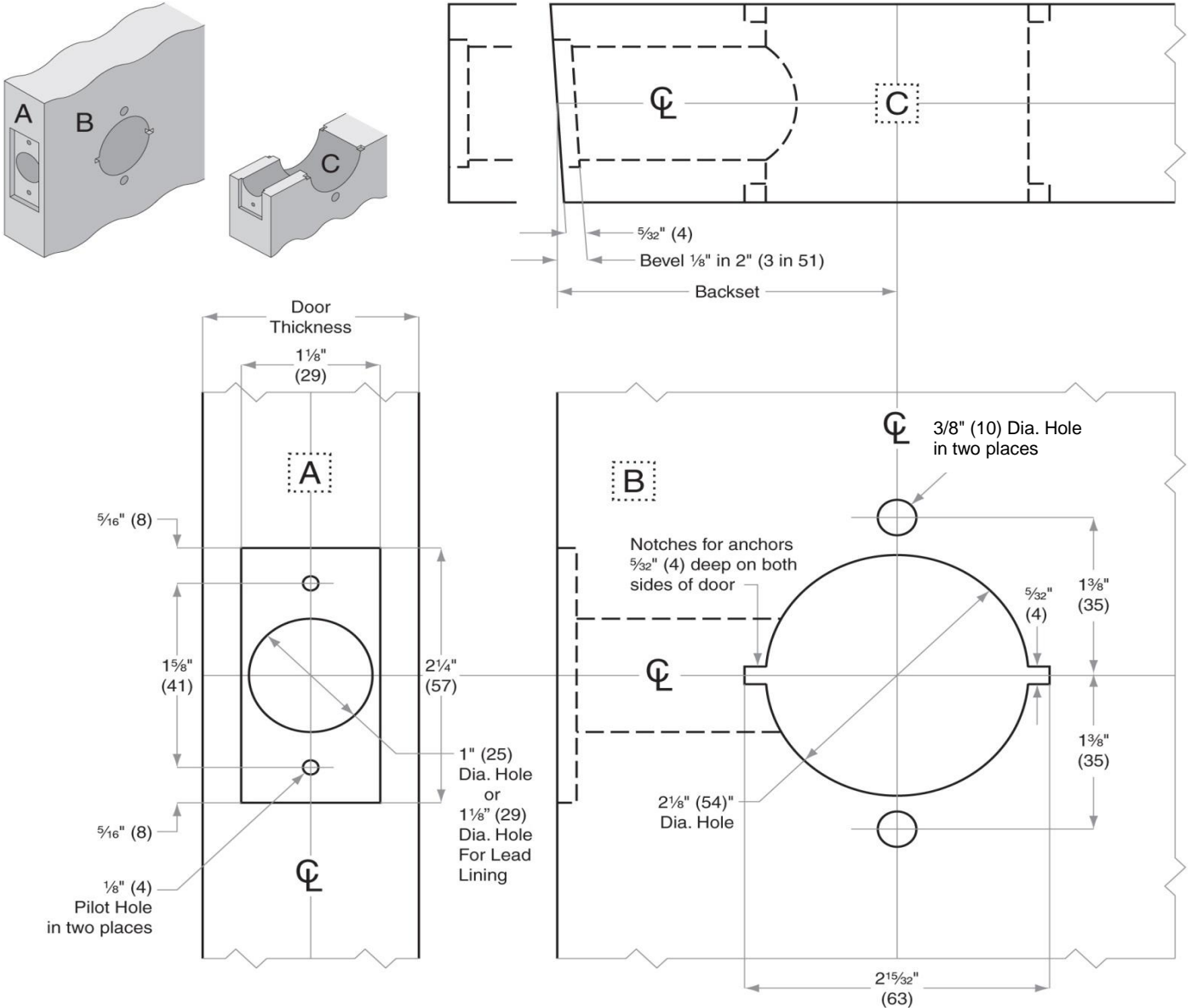




Design Hardware™

www.DesignHardware.net



<p><b>Template No.</b> <b>X.234</b></p>	<p><b>Design Hardware</b></p> <p><b>X Series Cylindrical Lockset</b></p>	<p><b>Functions</b></p> <p>61, 75, 76, 82, 84, 86, 87, 90, 110</p> <p>821C, 841C, 861C, 871C, 901C, 1101C</p> <p>w/ Std. 2 3/4" backset</p>
---	--	---