

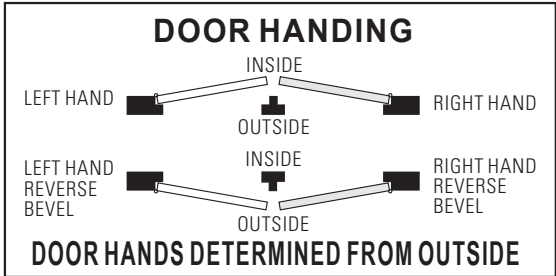
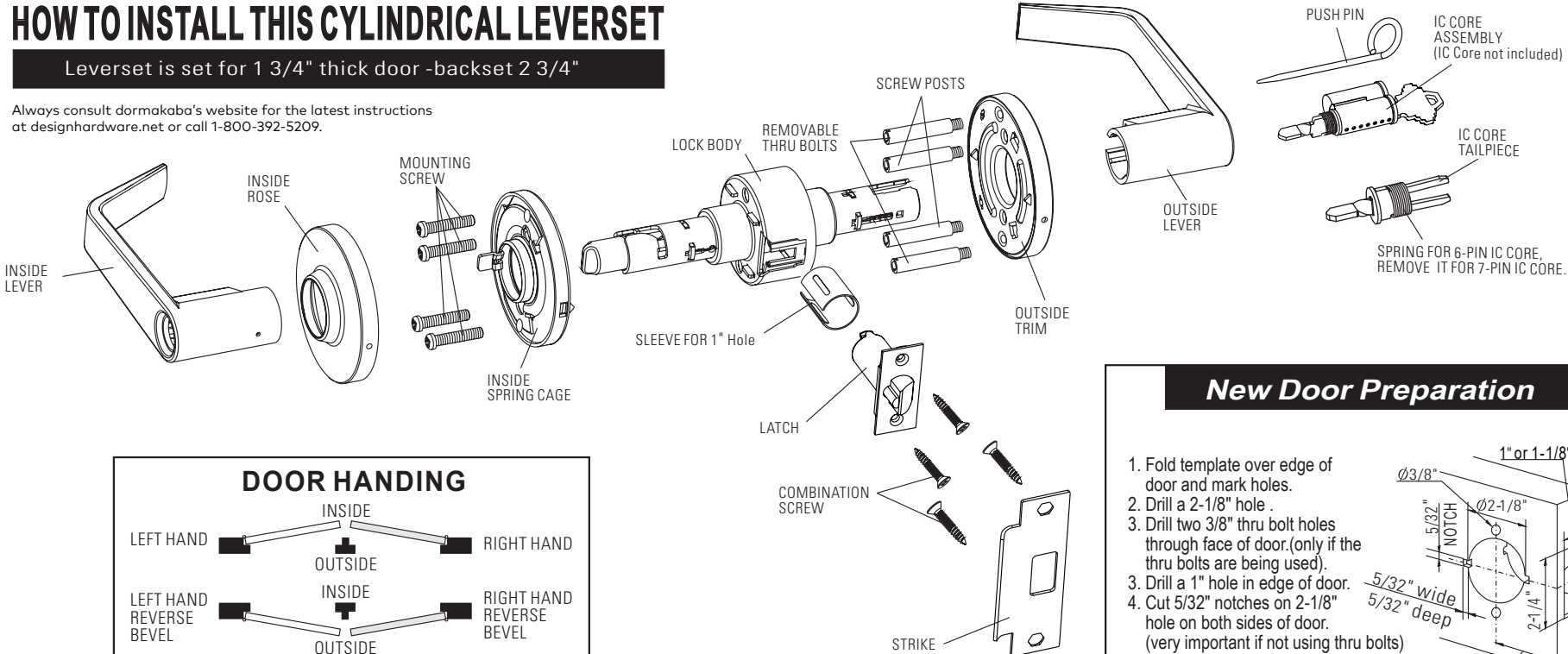
J Series Instructions for IC Installation



HOW TO INSTALL THIS CYLINDRICAL LEVERSET

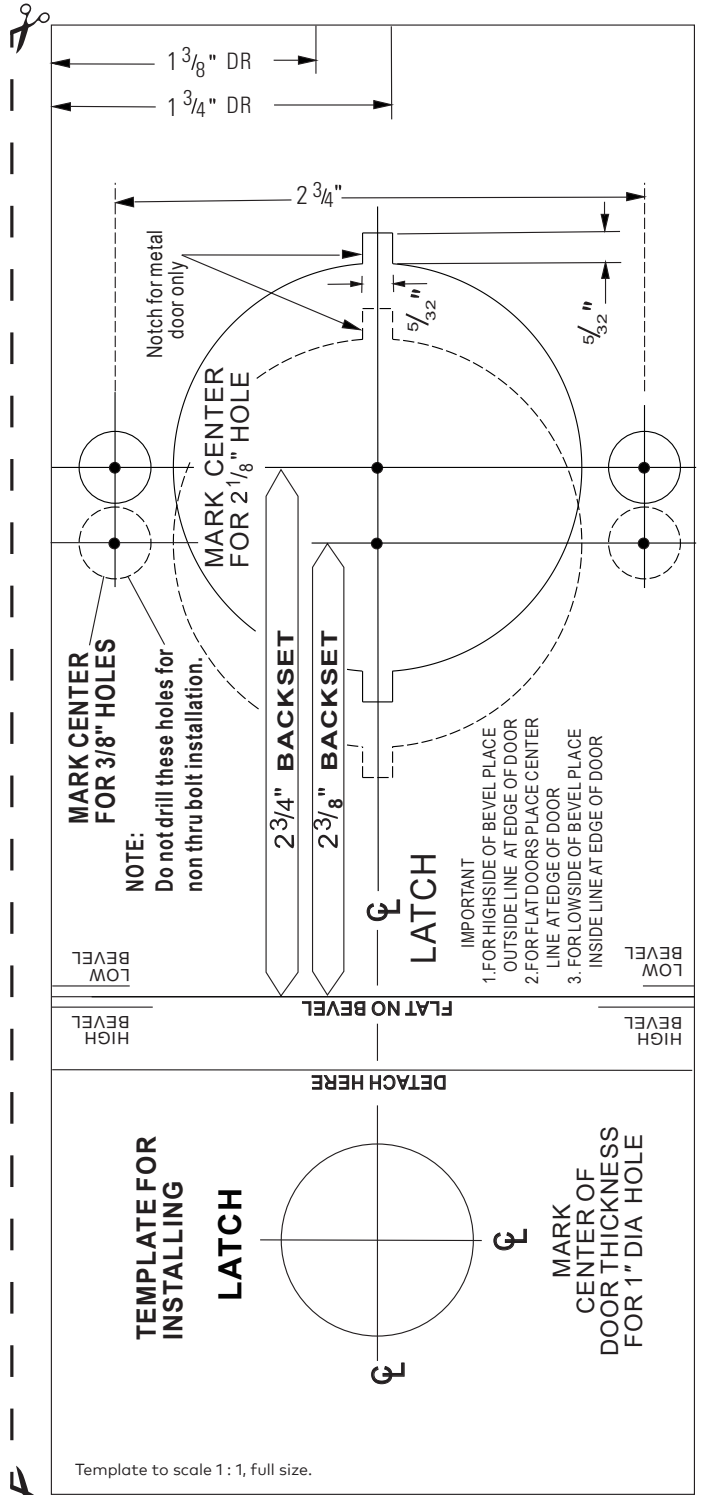
Leverset is set for 1 3/4" thick door -backset 2 3/4"

Always consult dormakaba's website for the latest instructions at designhardware.net or call 1-800-392-5209.



New Door Preparation

1. Fold template over edge of door and mark holes.
2. Drill a 2-1/8" hole.
3. Drill two 3/8" thru bolt holes through face of door. (only if the thru bolts are being used).
3. Drill a 1" hole in edge of door.
4. Cut 5/32" notches on 2-1/8" hole on both sides of door. (very important if not using thru bolts)
5. Mortise latch unit front
2-1/4" x 1" x 1/8" for 2-3/8" backset
or 2-1/4" x 1-1/8" x 1/8" for 2-3/4" backset



1 DISASSEMBLE INSIDE LEVER

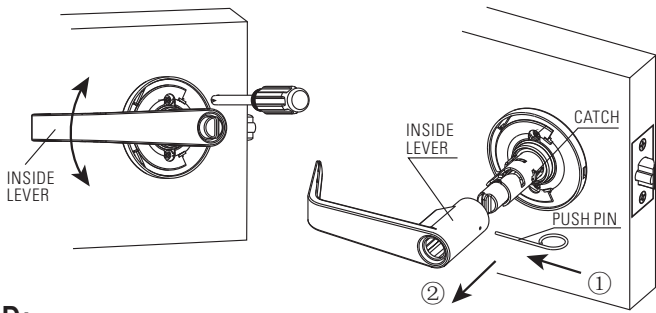
1A: Insert push pin into hole to depress catch and remove the lever.

2 INSTALL LEVERSET TO DOOR

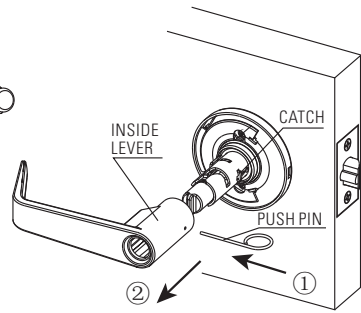
2A: Insert latchbolt and secure with combination screws.

2B: Place lock body into position. Make sure that latch prongs engage chassis in housing, and slide engages latch tail.

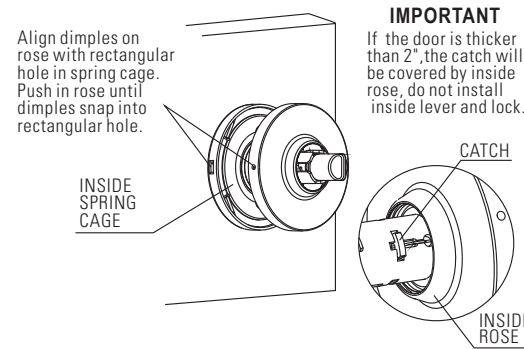
2C: Install inside spring cage, Screws should be hand tightened all the way down with a screwdriver.



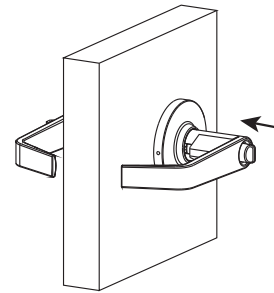
2D: Slide inside lever onto spindle and check to see if the rotation is smooth. Adjust the radial clearance between inside spring cage and inside lever if necessary.



2E: Remove inside lever using push pin.

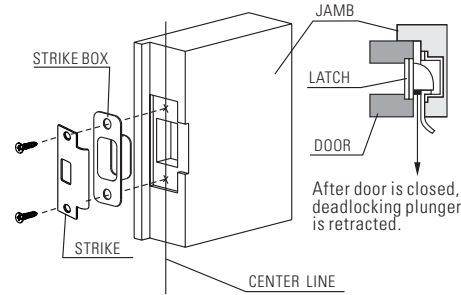


2F: Install inside rose and make sure inside rose and inside spring cage are tightened.

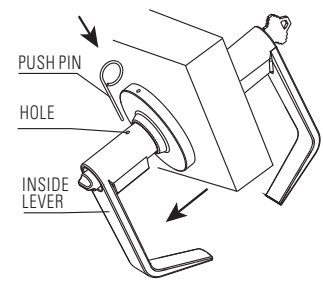


2G: Slide lever onto spindle. Push lever completely into place. (Pull on lever to make sure that catch is fully engaged).

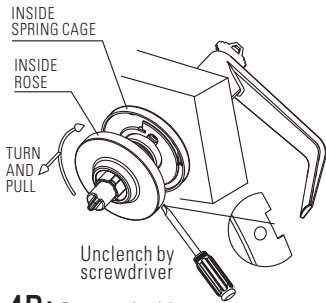
3 INSTALL STRIKE



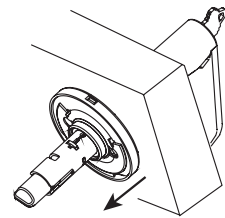
4 INSTRUCTIONS FOR REMOVING AN INSTALLED LOCK FROM THE DOOR



4A: Insert push pin into hole to depress catch and remove the lever.

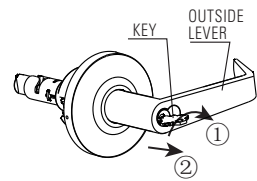


4B: Remove inside rose by turning and pulling off.

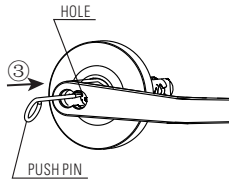


4C: Remove mounting screw with screwdriver and inside spring cage.

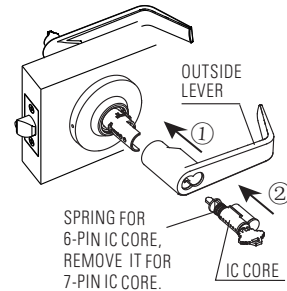
5 INSTRUCTIONS FOR IC CORE AND LEVER REPLACEMENT (If Required)



5A: Insert control key, turn approximately 10 degrees, then pull out the IC core.

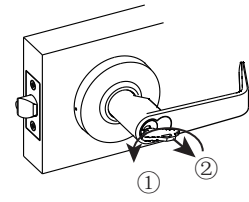


5B: (If required) Insert push pin to depress the catch and pull off the outside lever.



5C: Install lever and IC core with the control key.

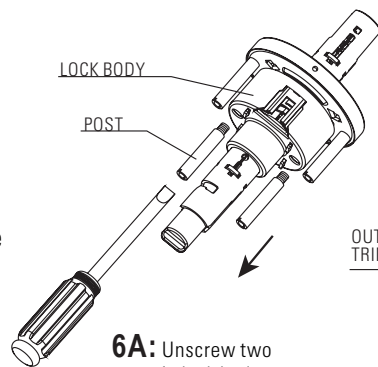
Right keyway direction after installing IC core. Keep the control key in a secure location and use the normal key for daily operation.



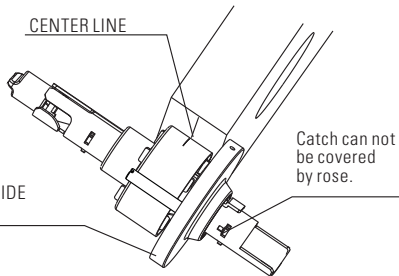
5D: Turn the key approximately 10 degrees counter clockwise and then remove the control key.

6 INSTRUCTIONS FOR ADJUSTING LOCK TO FIT DOOR THICKNESS OTHER THAN 1-3/4"

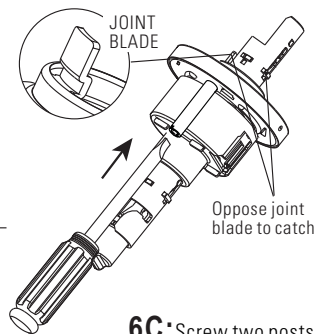
For thickness which is not 1-3/4", first step remove outside lever (refer to step 5A & 5B above), then follow the steps 6A, 6B, 6C, 6D, 6E for adjusting.



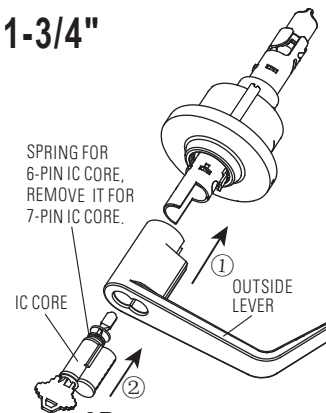
6A: Unscrew two posts in lock body by screwdriver.



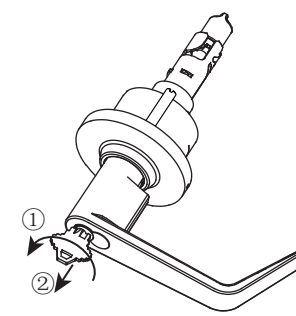
6B: Adjust outside trim according to the door thickness, make sure the lock body at both sides is symmetrical.



6C: Screw two posts back in so they hold the outside rose tightly.



6D: Install lever and IC core with the control key.



6E: Turn the key approximately 10 degrees counter clockwise and then remove the control key.

