

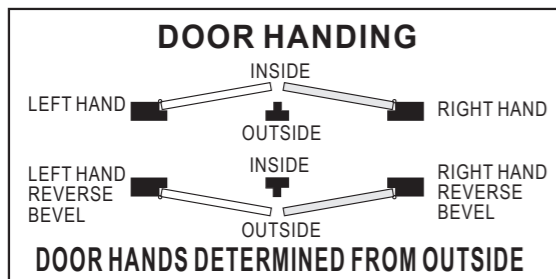
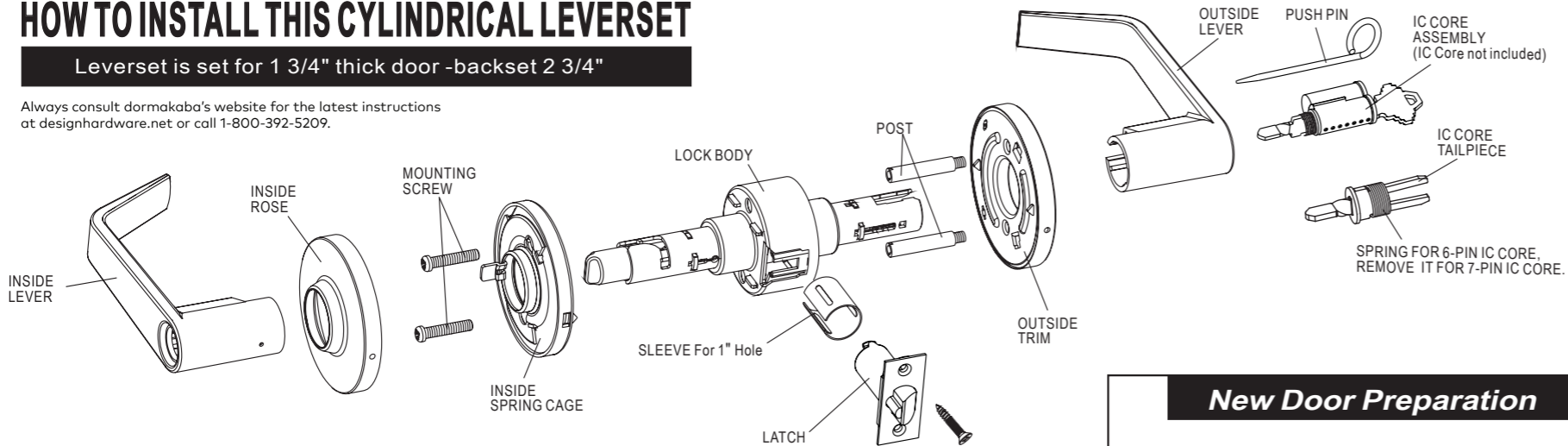
# V Series Instructions for IC Installation



## HOW TO INSTALL THIS CYLINDRICAL LEVERSET

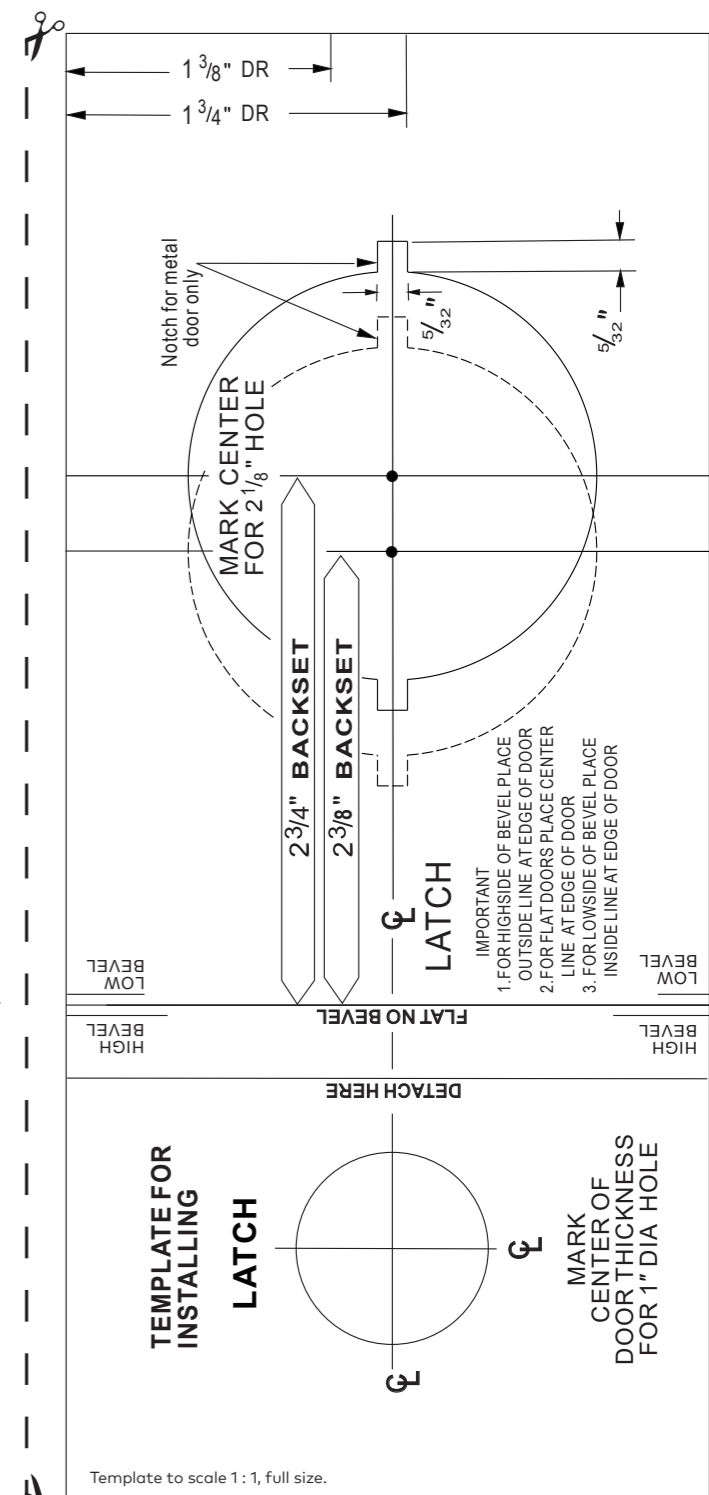
Leverset is set for 1 3/4" thick door -backset 2 3/4"

Always consult dorkakaba's website for the latest instructions at designhardware.net or call 1-800-392-5209.

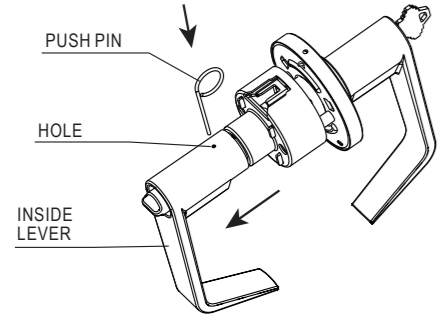


### New Door Preparation

1. Fold template over edge of door and mark holes.
2. Drill a 2-1/8" hole through face of door.
3. Drill a 1" hole in edge of door.
4. Cut 5/32" notches on 2-1/8" hole on both sides of door.
5. Mortise latch unit front  
2-1/4" x 1" x 1/8" for 2-3/8" backset  
or 2-1/4" x 1-1/8" x 1/8" for 2-3/4" backset

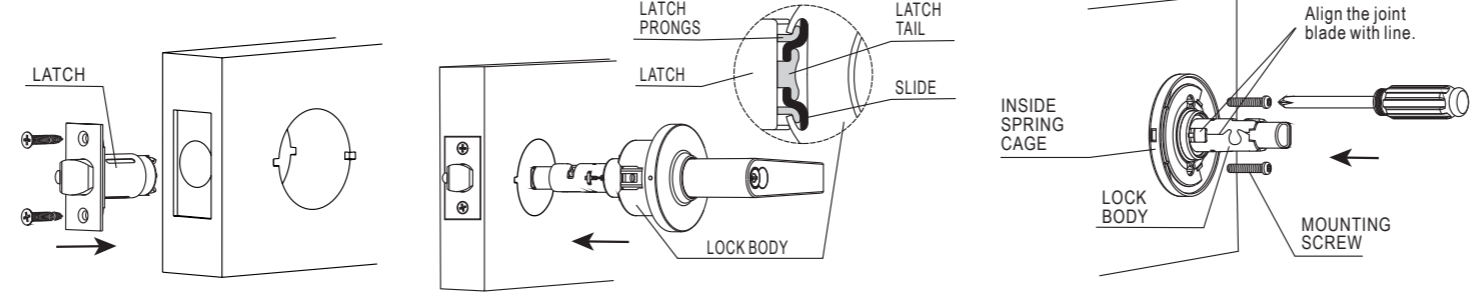


### 1 DISASSEMBLE INSIDE LEVER



**1A:** Insert push pin into hole to depress catch and remove the lever.

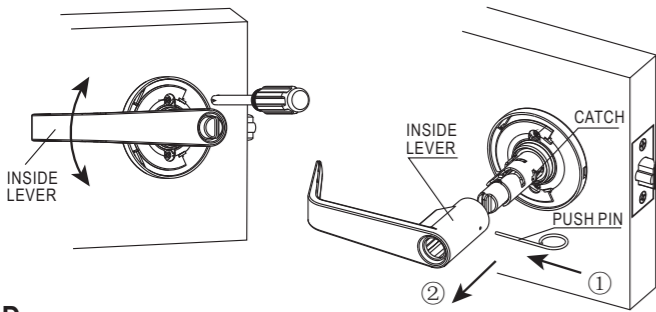
### 2 INSTALL LEVERSET TO DOOR



**2A:** Insert latchbolt and secure with combination screws.

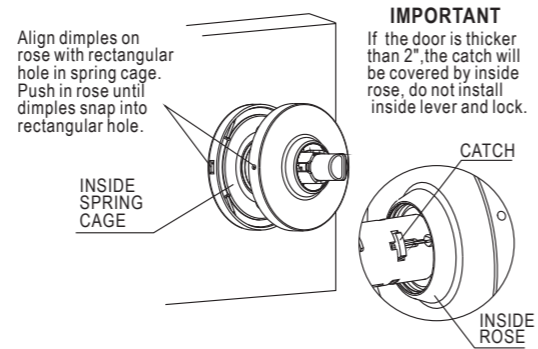
**2B:** Place lock body into position. Make sure that latch prongs engage chassis in housing, and slide engages latch tail.

**2C:** Install inside spring cage, Screws should be hand tightened all the way down with a screwdriver.

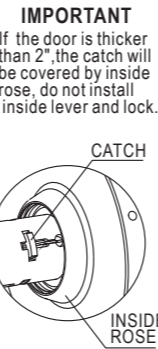


**2D:** Slide inside lever onto spindle and check to see if the rotation is smooth. Adjust the radial clearance between inside spring cage and inside lever if necessary.

**2E:** Remove inside lever using push pin.

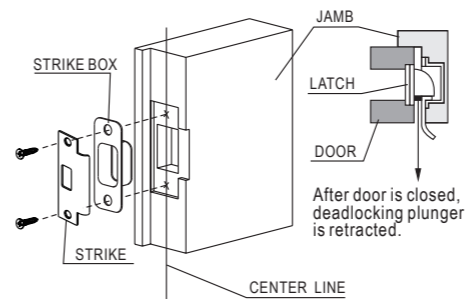


**2F:** Install inside rose and make sure inside rose and inside spring cage are tightened.



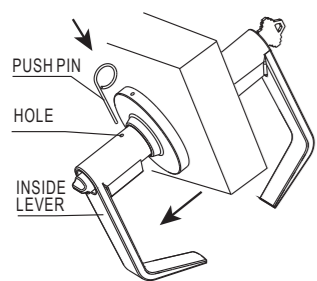
**2G:** Slide lever onto spindle. Push lever completely into place. (Pull on lever to make sure that catch is fully engaged).

### 3 INSTALL STRIKE

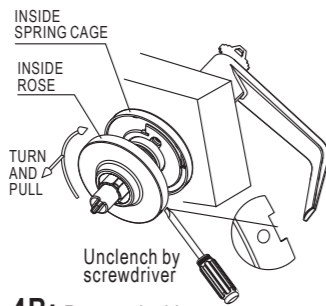


After door is closed, deadlocking plunger is retracted.

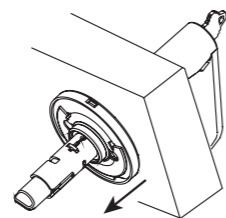
### 4 INSTRUCTIONS FOR REMOVING AN INSTALLED LOCK FROM THE DOOR



**4A:** Insert push pin into hole to depress catch and remove the lever.

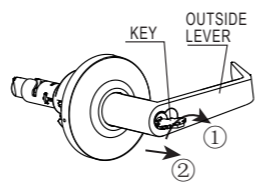


**4B:** Remove inside rose by turning and pulling off.

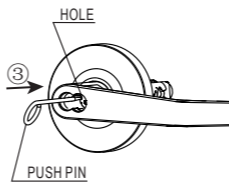


**4C:** Remove mounting screw with screwdriver and inside spring cage.

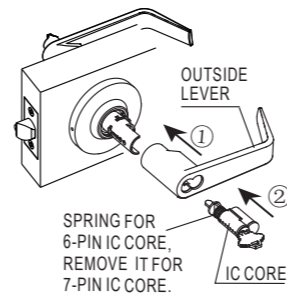
### 5 INSTRUCTIONS FOR IC CORE AND LEVER REPLACEMENT (If Required)



**5A:** Insert control key, turn approximately 10 degrees, then pull out the IC core.

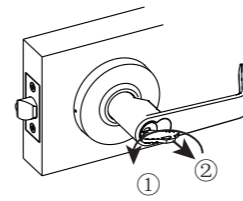


**5B:** (If required) Insert push pin to depress the catch and pull off the outside lever.



**5C:** Install lever and IC core with the control key.

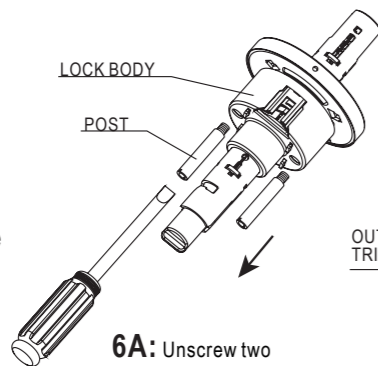
Right keyway direction after installing IC core. Keep the control key in a secure location and use the normal key for daily operation.



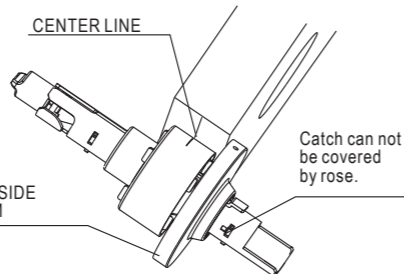
**5D:** Turn the key approximately 10 degrees counter clockwise and then remove the control key.

### 6 INSTRUCTIONS FOR ADJUSTING LOCK TO FIT DOOR THICKNESS OTHER THAN 1-3/4"

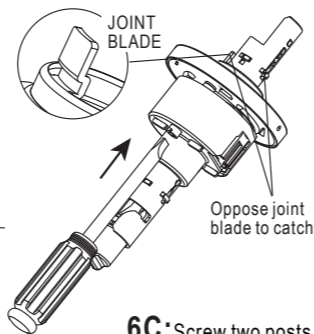
For thickness which is not 1-3/4", first step remove outside lever (refer to step 5A & 5B above), then follow the steps 6A, 6B, 6C, 6D, 6E for adjusting.



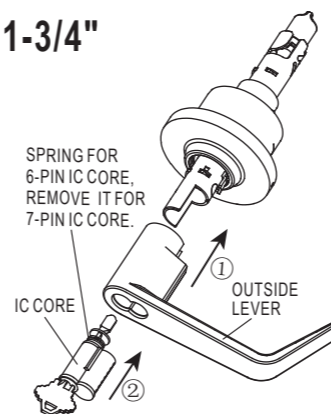
**6A:** Unscrew two posts in lock body by screwdriver.



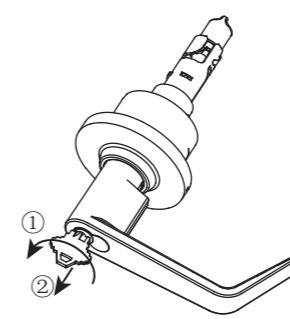
**6B:** Adjust outside trim according to the door thickness, make sure the lock body at both sides is symmetrical.



**6C:** Screw two posts back in so they hold the outside rose tightly.



**6D:** Install lever and IC core with the control key.



**6E:** Turn the key approximately 10 degrees counter clockwise and then remove the control key.

