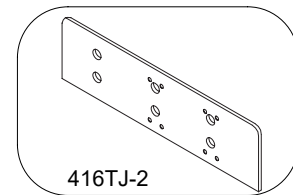
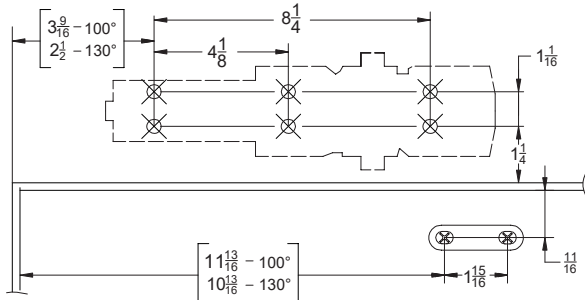


416 Drop Plates Installation Instructions

416 Push Side Top Jamb Drop Plate Allows 120° Maximum Opening

416 Push Side Mount : 416TJ-2 Drop Plate



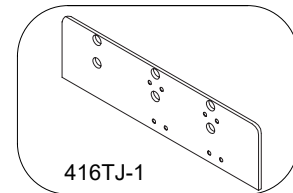
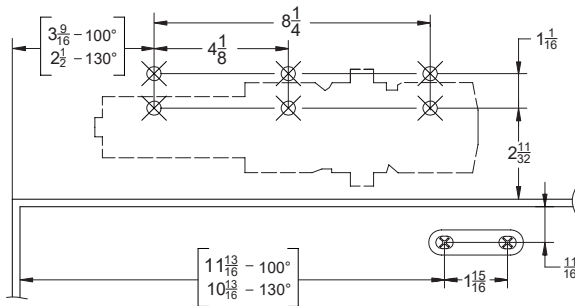
416TJ-2

Maximum Reveal : 2-9/16".

Left hand door shown, use opposite
for right hand door

416 Push Side Top Jamb Drop Plate Allows 120° Maximum Opening

416 Push Side Mount : 416TJ-1 Drop Plate



416TJ-1

Maximum Reveal : 2-9/16".

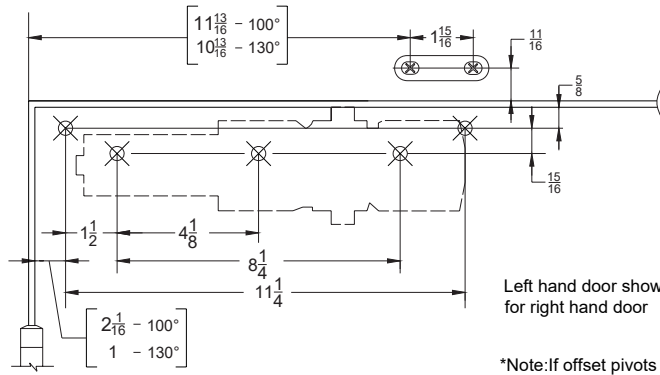
Left hand door shown, use opposite
for right hand door

INCH	11/16	1 1/16	1/4	1 5/16	2 11/32	2 1/2
M.M.	17	27	32	49	60	64
INCH	3 9/16	4 1/8	8 1/4	10 3/16	11 13/16	
M.M.	91	105	210	275	300	

Not to scale 1:1. Measurements are for reference only. Not a drilling template.

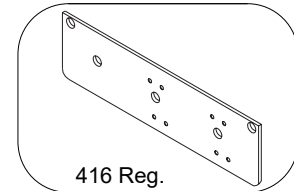
**416 Pull Side Regular Drop Plate
Allows 120° Maximum Opening**

**416 Pull Side Mount :
416 Reg. Drop Plate**



Left hand door shown, use opposite for right hand door

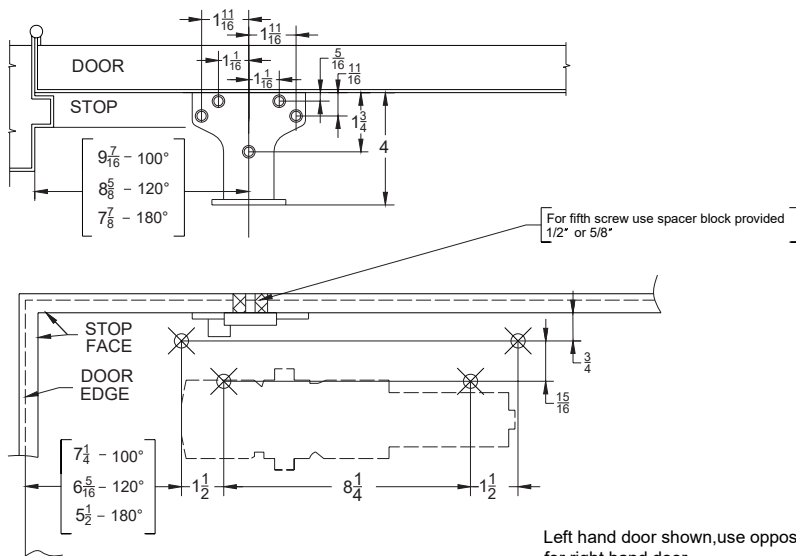
*Note: If offset pivots are used, increase these dimensions by 1/8\"/>



416 Reg.

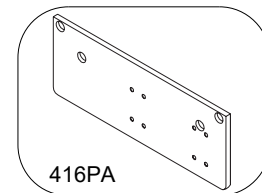
**416PA Push Side Drop Plate
Allows 180° Maximum Opening. Maximum hinge size 5" x 5"**

**416 Push Side Mount :
416PA Drop Plate**



[For fifth screw use spacer block provided 1/2" or 5/8"]

Left hand door shown, use opposite for right hand door



416PA

INCH	5/16	5/8	11/16	3/4	15/16	1	1 1/16	1 1/2	1 11/16	1 3/4
M.M.	8	16	17	19	24	26	27	38	43	44
INCH	2 1/16	4	5 1/2	6 5/16	7 1/4	7 7/8	8 5/8	9 7/16	11 1/4	
M.M.	53	102	139	160	184	200	219	240	286	

Not to scale 1:1. Measurements are for reference only. Not a drilling template.