

FOR 1000R & F1000R USE

FOR 1000V & F1000V USE

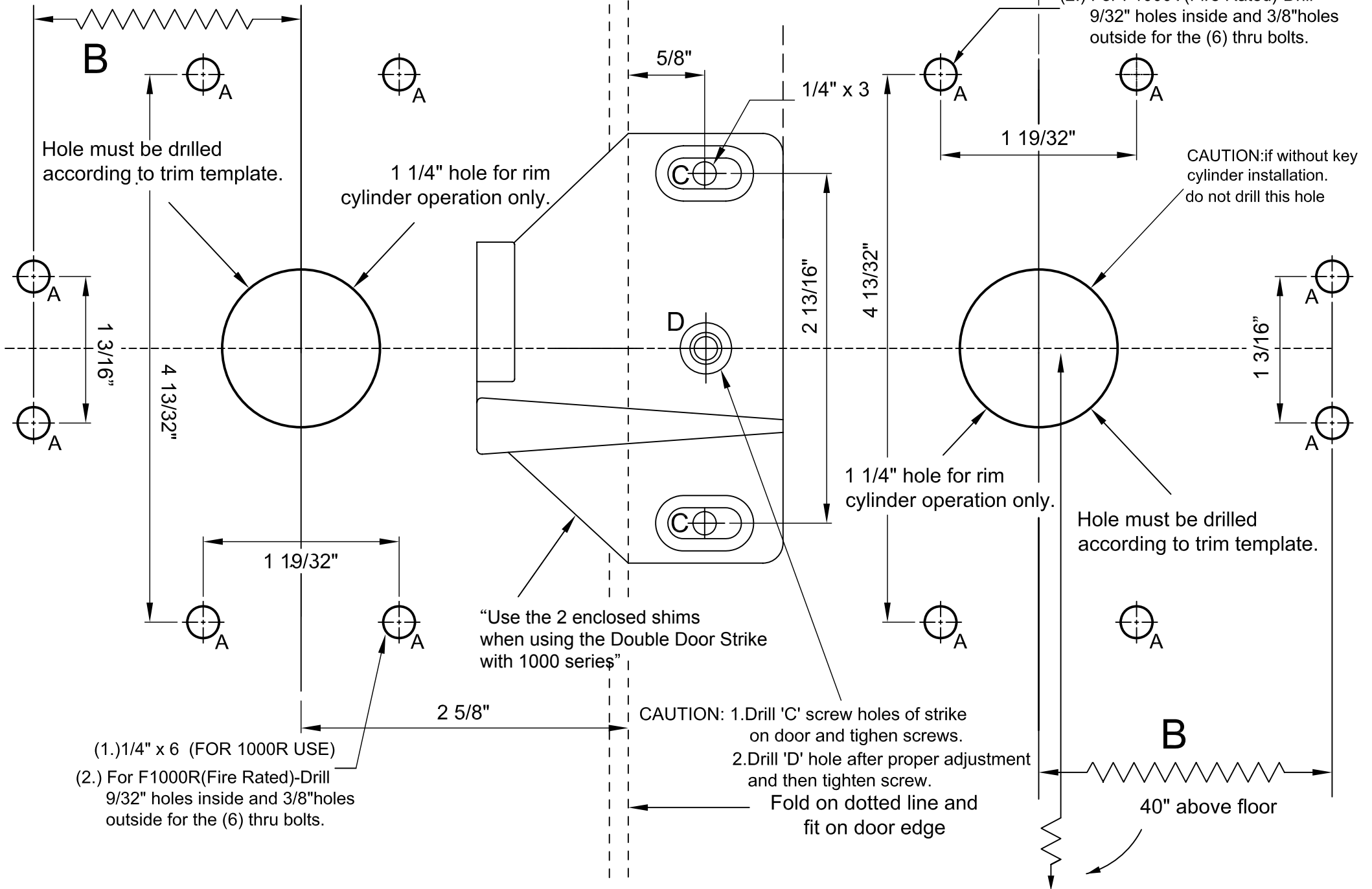
TEMPLATE(C)

Fold on dotted line and fit on door edge

3 9/32"

(1.) 1/4" x 6 (FOR 1000V USE)

(2.) For F1000V(Fire Rated)-Drill 9/32" holes inside and 3/8"holes outside for the (6) thru bolts.



(1.) 1/4" x 6 (FOR 1000R USE)
 (2.) For F1000R(Fire Rated)-Drill 9/32" holes inside and 3/8"holes outside for the (6) thru bolts.

CAUTION: 1. Drill 'C' screw holes of strike on door and tighten screws.
 2. Drill 'D' hole after proper adjustment and then tighten screw.
 Fold on dotted line and fit on door edge

Hole must be drilled according to trim template.