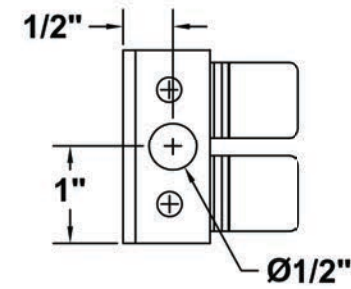
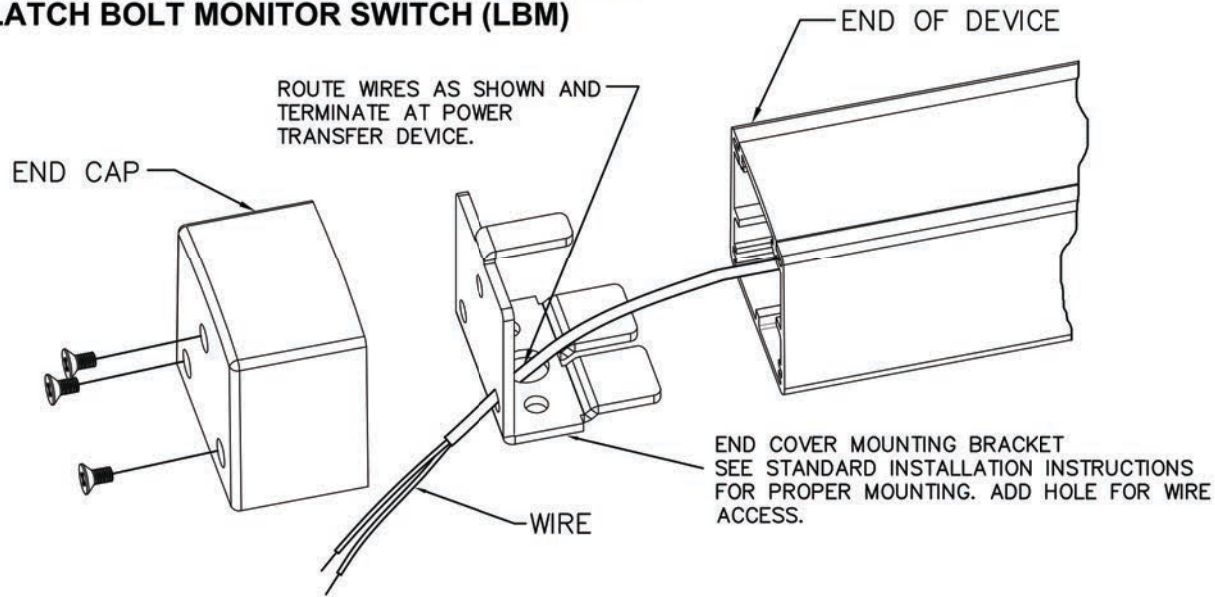


EXIT DEVICE TEMPLATE

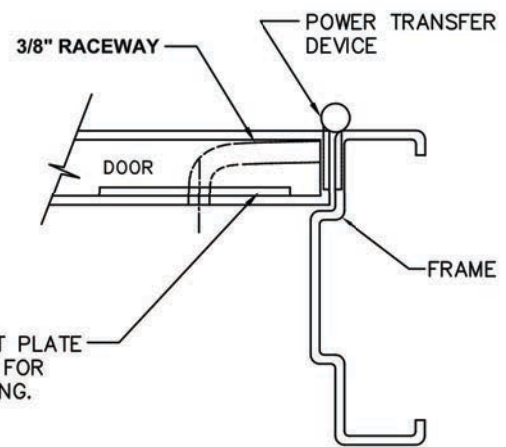
FOR USE WITH DESIGN HARDWARE 1000 SERIES EXIT DEVICE MODIFICATIONS

- ELECTRIC LATCH RETRACTION (ELR)
- ELECTRIC DOGGING (ED)
- REQUEST TO EXIT MONITOR SWITCH (REX)
- LATCH BOLT MONITOR SWITCH (LBM)

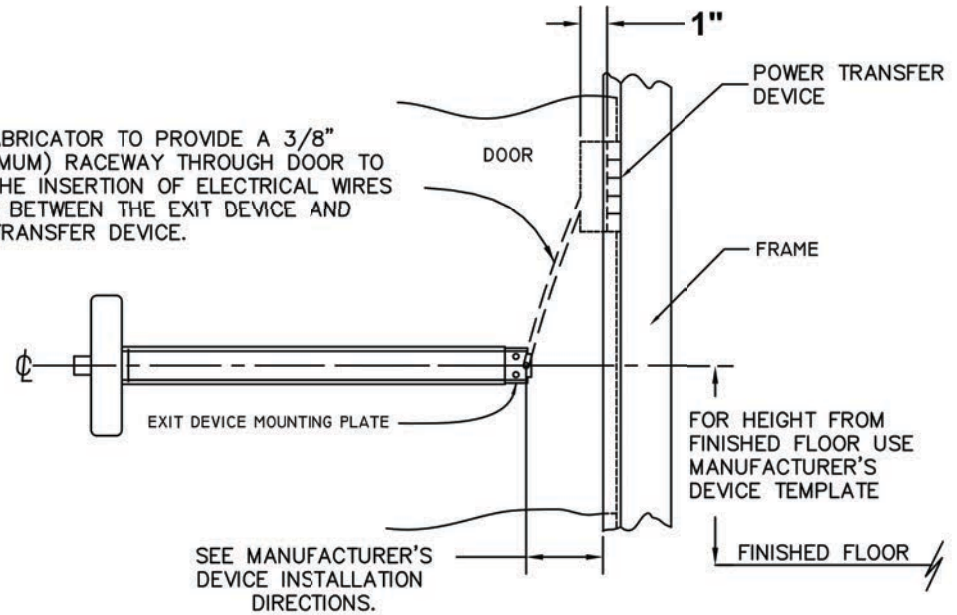
NOTE: USE STANDARD INSTALLATION INSTRUCTIONS FOR DOOR PREPARATION. PROVIDE ADDITIONAL PREP AS SHOWN FOR ELECTRIC MODIFICATIONS.



PROVIDE 1/2" DIAMETER HOLE IN END COVER MOUNTING BRACKET FOR WIRE ACCESS.



DOOR FABRICATOR TO PROVIDE A 3/8" DIA.(MINIMUM) RACEWAY THROUGH DOOR TO ALLOW THE INSERTION OF ELECTRICAL WIRES RUNNING BETWEEN THE EXIT DEVICE AND POWER TRANSFER DEVICE.



SEE MANUFACTURER'S DEVICE INSTALLATION DIRECTIONS.