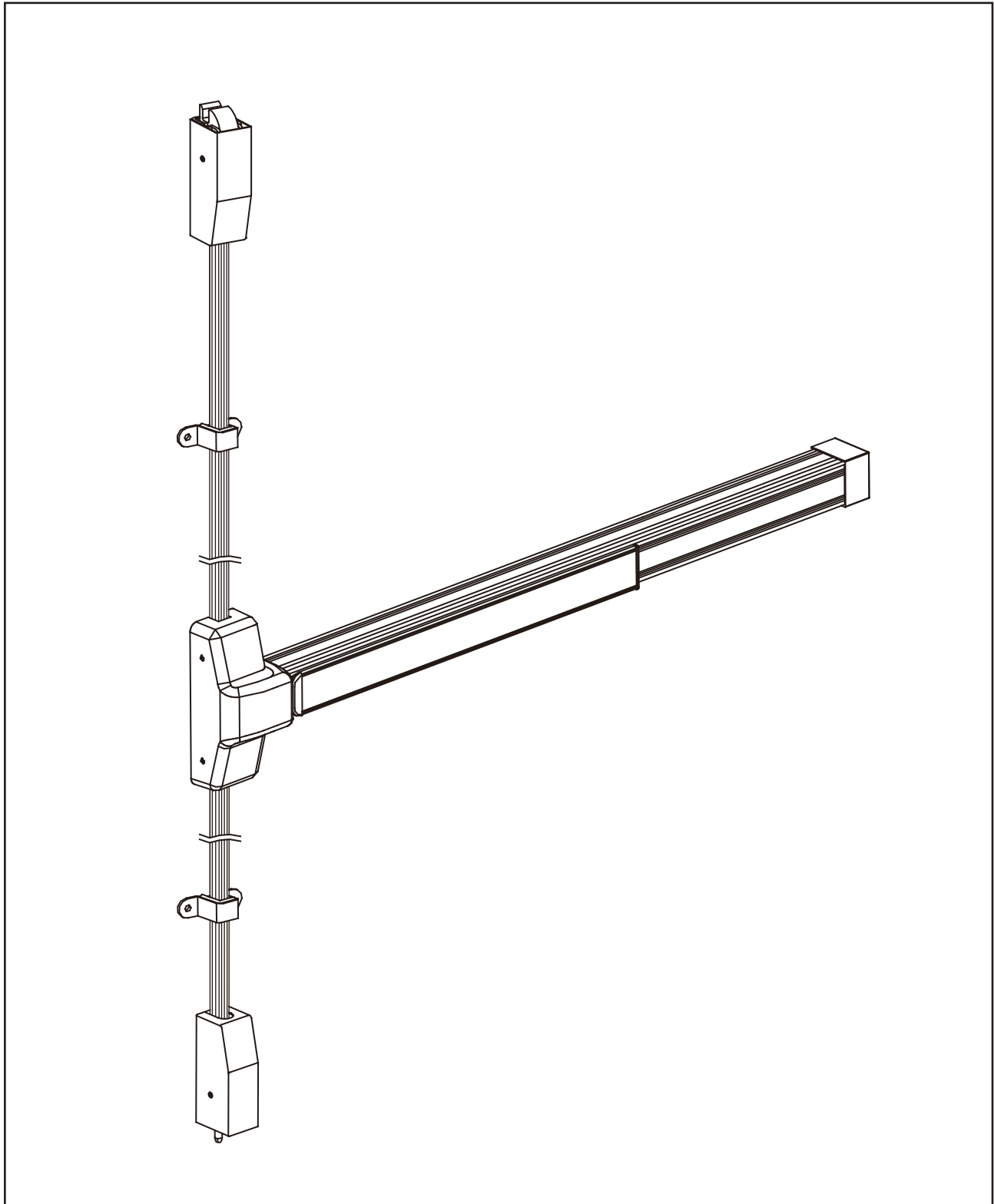


F1000V Fire Rated Surface Vertical Rod Exit Device Installation Instructions



A INSTALLATION PROCEDURES:**STEP 1 : DIRECTIONS FOR CHANGING HANDING OF DEVICE**

Handing of device is preset at factory for RHR. To change handing of device, follow steps shown below and see DRAWING FOR STEP 1.

1. Loosen screw 'A' and remove screw 'B' and spring 'C'.
2. Reverse the positions of screw 'B' and spring 'C' and then tighten screw 'A'.
3. The device is now set for LHR.

STEP 2 : MARK CENTER LINE ON DOOR

Mark center line on inside of door. Establish the horizontal center line of the device by drawing a line across the door 40" above floor line.

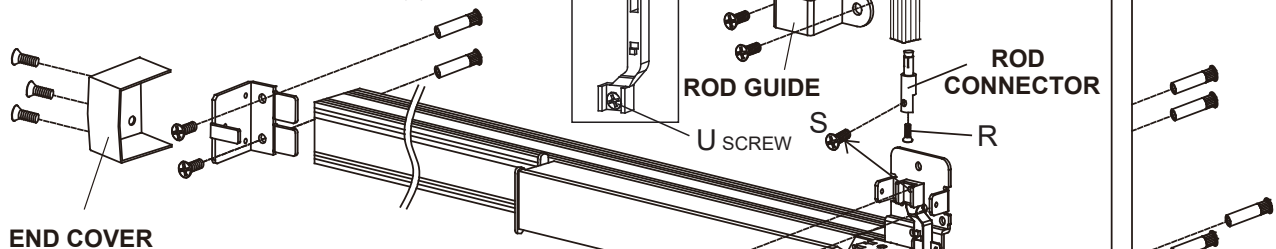
STEP 3 : INSTALL CYLINDER

See DRAWING FOR STEP 3.

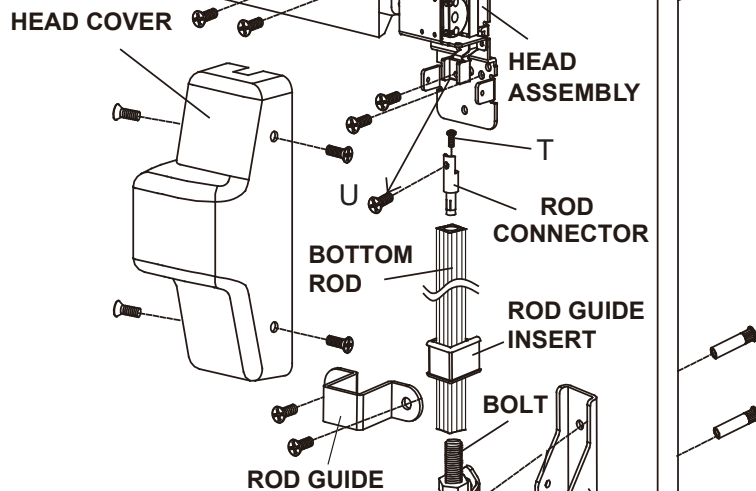
(Or, install other trims. See installation instructions of these outside trims. If not required, DO NOT DRILL CYLINDER HOLE, skip to STEP 4.)

STEP 4 : MARK DOOR AND DRILL HOLES

1. Fold and apply template (A) to edge of door and mark door as indicated on template (A).
2. Drill holes A X 6 in accordance with the diameters as indicated on template (A)

**STEP 5 : INSTALL DEVICE BODY**

1. Remove the head cover from the device body and end cover from the mounting bracket by removing the screws that hold them on.
2. Align tailpiece receiver of exit device and trim/cylinder tailpiece, so it slides onto trim/cylinder tailpiece. Also align screw holes on exit device head with mounting holes on the door.
3. Install and tighten the mounting screws for the head of the exit device and end cover mounting bracket.

**STEP 6 : INSTALL TOP STRIKE**

1. Align vertical center line of top strike and top rod as shown on template (B-1). Mark door as indicated on template (B-1).
2. Install top strike with its mounting screws and adjust as needed.

STEP 7 : INSTALL TOP LATCH ASSEMBLY

1. Align vertical center line of top latch assembly and top rod as shown on template (B-1). Mark door as indicated on template (B-1).
2. Drill hole C, 2" from bottom edge of frame stop.
3. Align top latch base with hole C and install screw but do not tighten all the way.

Install rod guides onto top and bottom rods at the midway point

THRU BOLTS x10

FLOOR STRIKE
Drill a 5/8" dia. hole in the floor 1" deep, and align with center of bolt in bottom latch assembly

4. Install top latch assembly into top latch base. Adjust the location of the top latch assembly and top latch base per template B-1 to get 3/32" space between top strike and inside of top latch bolt.
5. Remove top latch assembly and tighten screw C.
6. Drill hole D, reinstall top latch assembly into top latch base and tighten screw D.

STEP 8 : INSTALL BOTTOM LATCH ASSEMBLY

1. Align vertical center line of bottom latch assembly and bottom rod as shown on template Mark door as indicated on template (B-2).
CAUTION : Be sure the distance from the bottom edge of door to the bottom latch base is 3/8".
2. Drill hole M, 1 7/32" from bottom edge of door.
3. Align bottom latch base with hole M, adjust it's location to have 3/8" between the bottom of the door and the bottom edge of the bottom latch base. Then tighten screw M.
4. Drill hole N, install bottom latch assembly into bottom latch base and tighten screw N.

STEP 9 : INSTALL AND ADJUST TOP ROD (USE LONGER ROD)

1. Keep the end of the top rod with the threaded hole upward to connect it with the threaded bolt (thread onto bolt approx. 1") in the top latch assembly.
2. Put rod guide insert onto top rod.
3. Put rod connector into bottom unthreaded end of top rod and tighten screw (R) to secure into rod.
4. Remove the screw (S) on the lift mechanism, connect the bottom of rod connector with lift mechanism and reinstall screw (S) but not tighten it all the way.
5. Push actuating bar down to check operation. Cut off extra rod length to make top rod work properly. Then tighten screw (S) all the way.
NOTE : Top rod must be cut to correct length, leave 1" of adjustability for latch adjustment. Cut top rod at bottom end without threads. (DO NOT CUT END WITH THREADS)

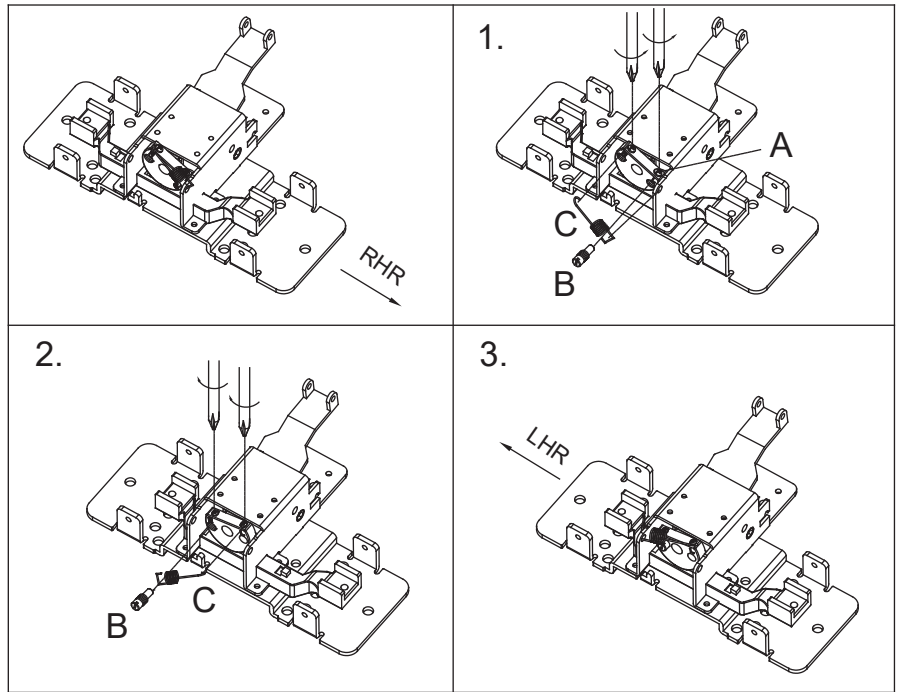
STEP 10 : INSTALL AND ADJUST BOTTOM ROD (USE SHORTER ROD)

1. Keep the end of the bottom rod with the threaded hole downward to connect it with the threaded bolt (thread onto bolt approx. 1") in the bottom latch assembly.
2. Put rod guide insert onto bottom rod.
3. Put rod connector into top unthreaded end of bottom rod and tighten screw (T) to secure into rod.
4. Remove the screw (U) on the lift mechanism connect the bottom of rod connector with lift mechanism and reinstall screw (U) and tighten.

STEP 11 : INSTALL FLOOR STRIKE

1. Let the bolt in the lower bottom latch assembly touch the floor and mark on floor.
2. Drill a 5/8" dia, 1" deep hole.
3. Let the bolt in the lower bottom latch assembly insert into the center hole of floor strike and mark 3 anchor / screw holes on floor.
4. Drill 3 anchor / screw holes, 1/4" dia, 1 1/8" deep.
5. Hammer 3 anchors into 3 anchor / screw holes. Tighten up 3 screws.

DRAWING FOR STEP 1



STEP 12 : TEST ACTUATING BAR AND DOGGING OPERATION

1. The top latch assembly should engage the top strike and the bottom latch assembly should engage the floor strike when the door is closed. If the door can be pushed open without depressing the actuating bar, the top rod has been over adjusted. Readjust as needed for proper latching.
2. The top and bottom latch assembly should disengage from the strikes freely when the actuating bar is depressed. If they do not disengage, adjust the bolt in the bottom latch assembly as needed and retest for proper operation.

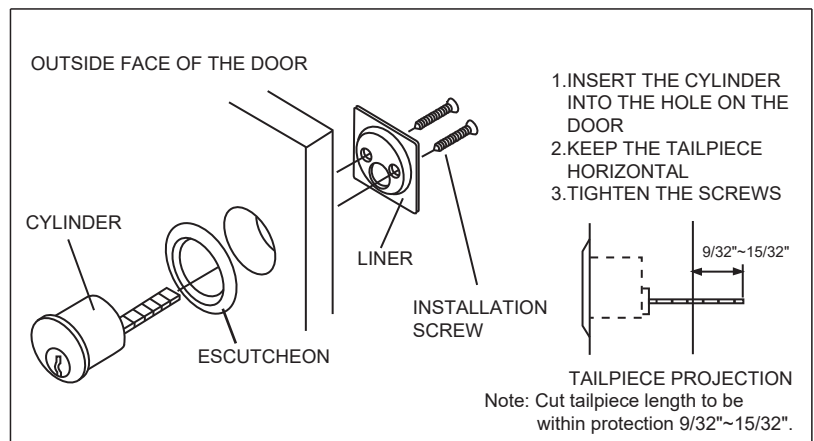
STEP 13 : INSTALL TWO ROD GUIDES

1. Put rod guides onto top and bottom rods at the midway point and mark and drill holes.
2. Fit rod guide insert into rod guide and then install and tighten screws.

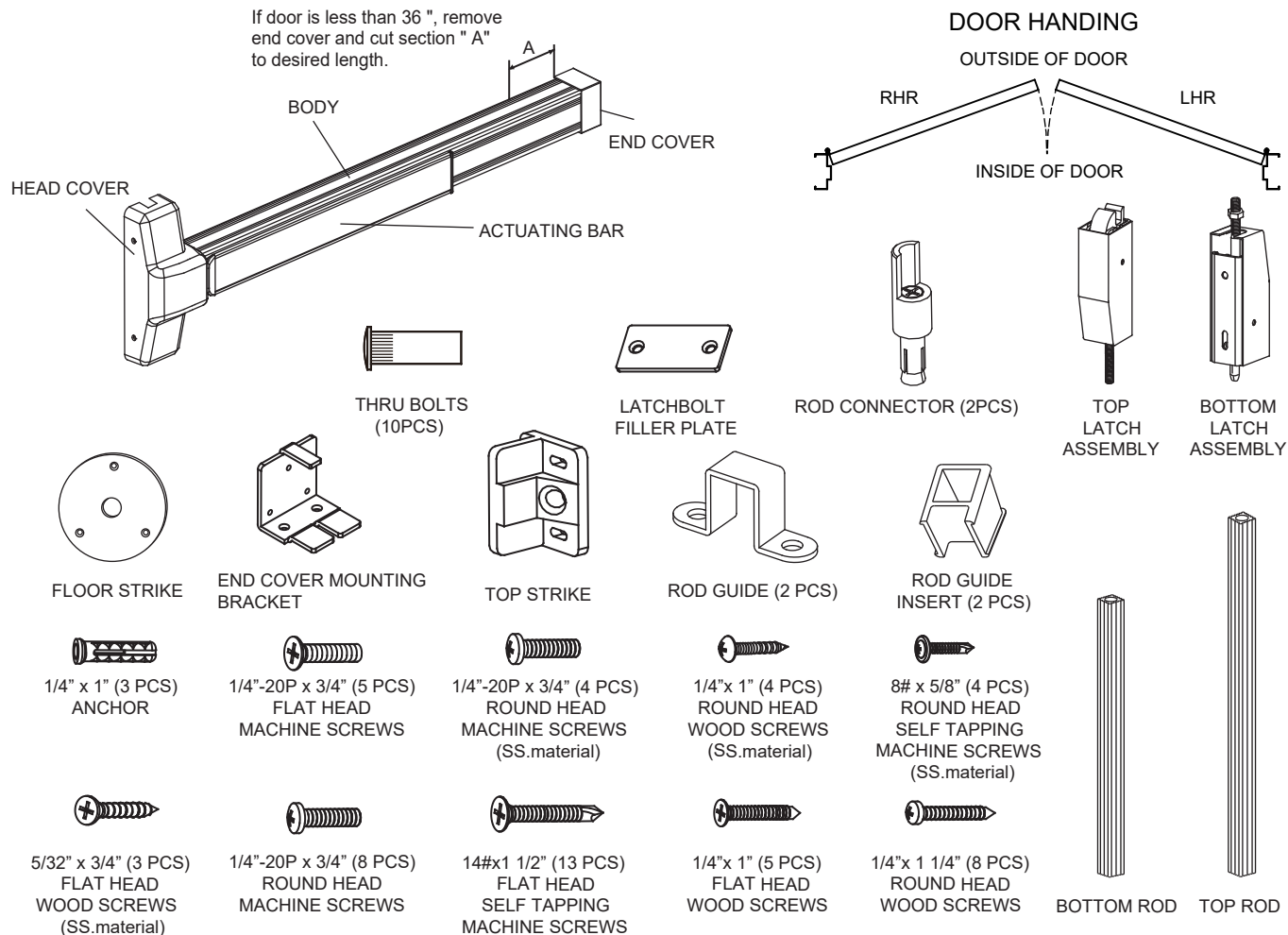
STEP 14 : INSTALL 4 COVERS

Install head cover, end cover, top latch cover, bottom latch cover and tighten screws.

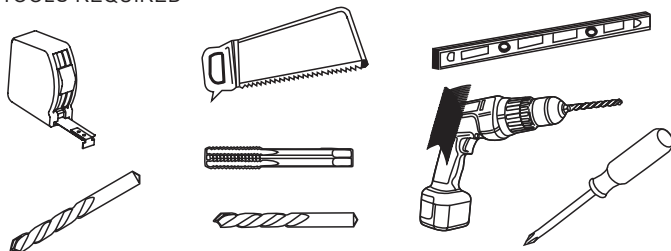
DRAWING FOR STEP 3



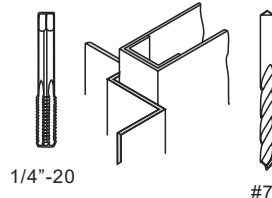
B IDENTIFICATION OF PARTS



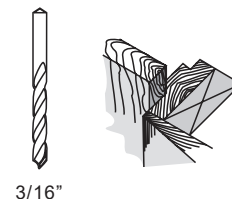
TOOLS REQUIRED



METAL

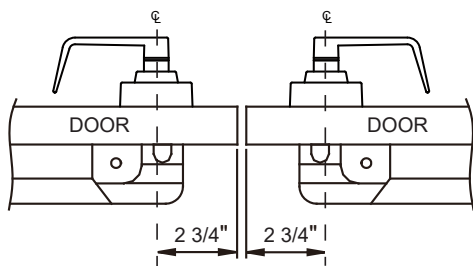


WOOD



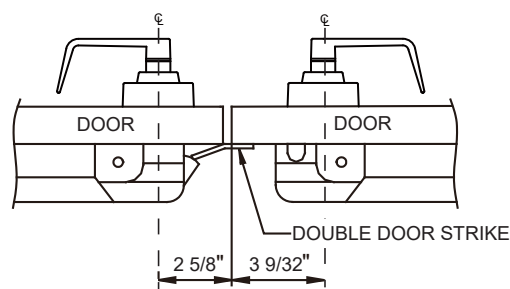
C TYPE OF INSTALLATION

A. Surface Vertical Rod x Surface Vertical Rod on a Pair of Doors



For complete template information
Please refer to Surface Vertical
Rod exit device template.

B. Rim w/ DDS x Surface Vertical Rod on a Pair of Doors



When installing Rim device x SVR device on a
pair of doors a Double Door Strike (DDS)
is required. For complete template information,
please refer to the DDS template.

Not to scale 1:1. Measurements are for reference only. Not a drilling template.

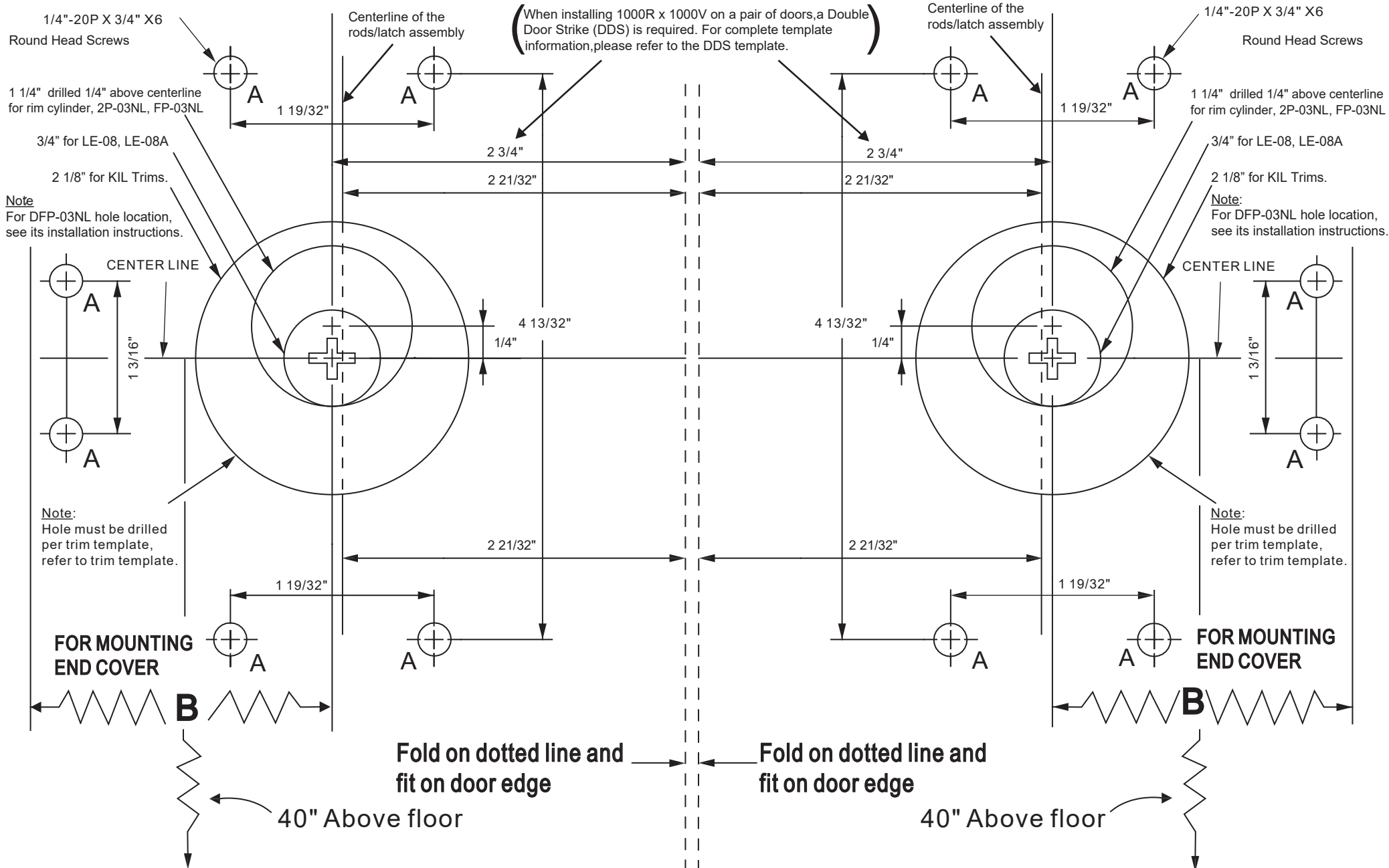
(A) For 1000V series (UL Listed)-Drill & tap for (6) 1/4"x20P X3/4" machine screws for exit device
Drill (6) 3/16" pilot holes for self tapping machine screws or wood screws for exit device.

TEMPLATE (A)

(B) For F1000V (Fire Rated)-Drill 9/32" holes inside and 3/8" holes outside for the (6) thru bolts.

FOR RIGHT HAND DOOR INSTALLATION

FOR LEFT HAND DOOR INSTALLATION



Template to scale 1 : 1, full size.

(A) For 1000V series (UL Listed)-drill & tap for (2) 1/4"x20P X3/4" machine screws (C,D) for top latch assembly or,drill (2) 3/16" pilot holes (C,D) for self tapping machine screws or wood screws for top latch assembly.

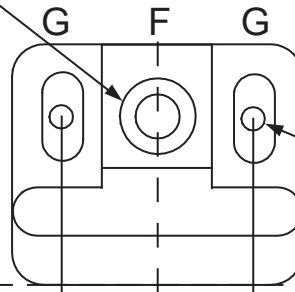
(B) For F1000V (Fire Rated)-drill 9/32" holes (C,D) inside and 3/8" holes (C,D) outside for the (2) thru bolts.

TEMPLATE(B-1) for TOP LATCH ASSEMBLY

F 1/4" - 20P x 3/4"
FLAT HEAD MACHINE SCREW

CAUTION :

Drill " F " hole after top latch assembly properly works



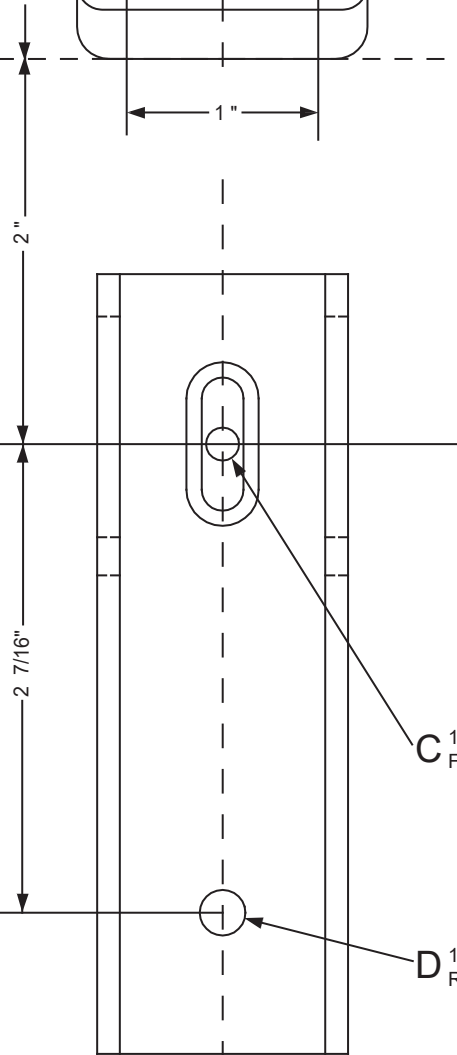
TOP STRIKE

G 1/4" - 20P x 3/4" x 2
FLAT HEAD MACHINE SCREWS

FOLD REVERSELY FOR
TOP STRIKE INSTALLATION

FRAME STOP

FOLD ON DOTTED
LINE AND FIT
ON DOOR FRAME



DOOR EDGE

C 1/4" - 20P x 3/4"
FLAT HEAD SCREW

D 1/4" - 20P x 3/4"
ROUND HEAD SCREW

DOOR EDGE

TOP STRIKE

TOP LATCH BOLT

CAUTION :

Adjust the location of the top latch assembly and top latch base so there is 3/32" space between top strike and inside of top latch bolt.

- Note : When installing top latch assembly
1. Drill (1) C hole and install screw but do not tighten all the way.
 2. Make sure distance from door frame to line W is 2".
 3. Drill (1) D holes and install and tighten screws.
 4. Tighten screw in hole C all the way.

Centerline of the
rods/latch assembly

Template to scale 1 : 1, full size.

(A) For 1000V series (UL Listed)-Drill & tap for (2) 1/4"x20P X3/4" machine screws (N,M) for bottom latch assembly or,drill (2) 3/16" pilot holes (N,M) for self tapping machine screws or wood screws for bottom latch assembly.

(B) For F1000V (Fire Rated)-Drill 9/32" holes (N,M) inside and 3/8" holes (N,M) outside for the (2) thru bolts.

Note : When installing bottom latch assembly

1. Drill (1) N hole and install screw but do not tighten all the way.
2. Drill (1) M hole and install and tighten screw
3. Tighten screw in hole N all the way.

TEMPLATE(B-2) for BOTTOM LATCH ASSEMBLY

