

# F2000V Surface Vertical Rod Exit Device Template



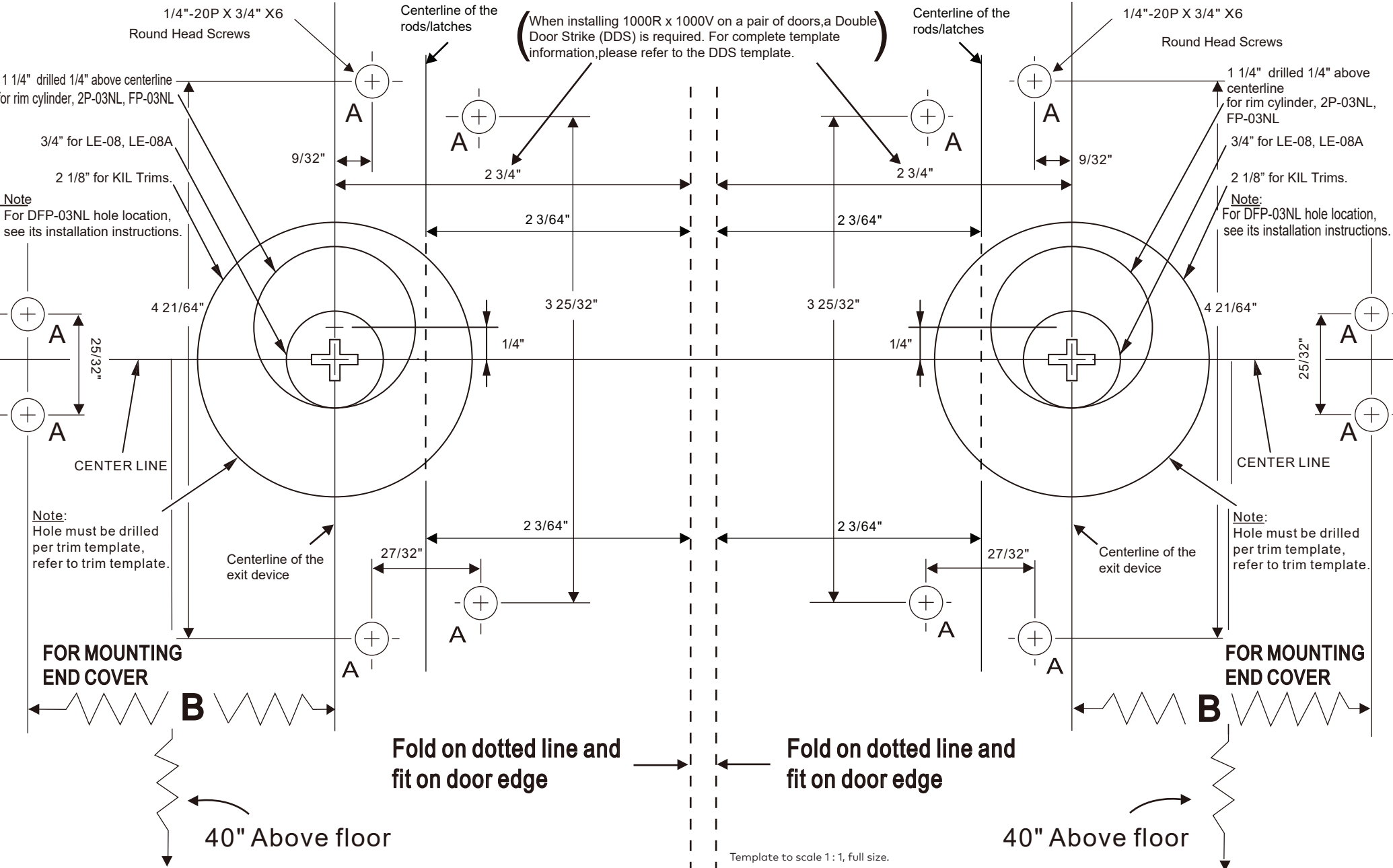
(A) For 2000V series (UL Listed)-Drill & tap for (6) 1/4"x20P X3/4" machine screws for exit device  
 Drill (6) 3/16" pilot holes for self tapping machine screws or wood screws for exit device.

## TEMPLATE (A)

(B) For F2000V (Fire Rated)-Drill 9/32" holes inside and 3/8" holes outside for the (6) thru bolts.

### FOR RIGHT HAND DOOR INSTALLATION

### FOR LEFT HAND DOOR INSTALLATION



Template to scale 1 : 1, full size.

# TEMPLATE (B-1)

(A) For 2000V series (UL Listed)-drill & tap for (3) 1/4"x20P X3/4" machine screws (2xD,E) for latches.  
Drill (3) 3/16" pilot holes (2xD,E) for self-tapping machine screw or wood screws for latches.

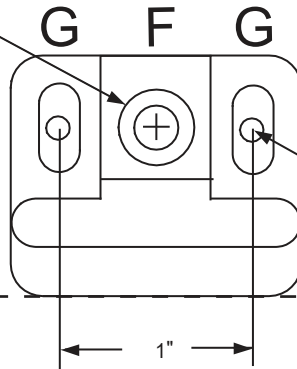
(B) For F2000V (Fire Rated)-drill 9/32" holes (2xD,E) inside and 3/8" holes (2xD,E) outside for the (3) thru bolts.

**F** 1/4" - 20P x 3/4" x 1  
FLAT HEAD MACHINE SCREW

**CAUTION :**

Drill " F " hole after latch bolt properly works

FOLD REVERSELY FOR TOP STRIKE INSTALLATION



**G** 1/4" - 20P x 3/4" x 2  
FLAT HEAD MACHINE SCREWS

TOP STRIKE

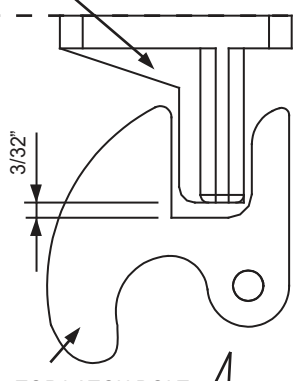
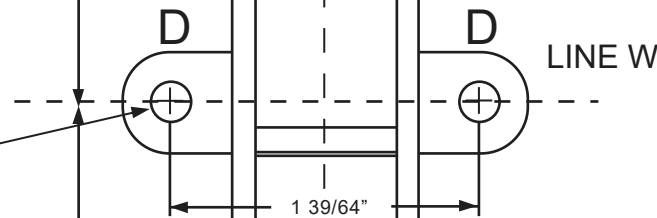
FRAME STOP

FOLD ON DOTTED LINE AND FIT ON DOOR FRAME

**CAUTION:**

BE SURE THE DISTANCE FROM DOOR FRAME TO LINE W MUST BE 2"

**D** 1/4" - 20P x 3/4" x 2  
ROUND HEAD SCREW



TOP LATCH BOLT

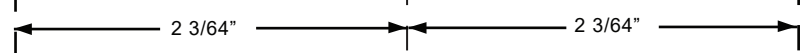
**CAUTION :**  
Adjust the location of the top latch assembly and top latch base so there is 3/32" space between top strike and inside of top latch.

DOOR EDGE

**TOP LATCH ASSEMBLY**

DOOR EDGE

**E** 1/4" - 20P x 3/4"  
ROUND HEAD SCREW



Centerline of the rods/latches

- Note : When installing top latch assembly
1. Drill (1) E hole and install screw but do not tighten all the way.
  2. Make sure distance from door frame to line W is 2".
  3. Drill (2) D holes and install and tighten screws.
  4. Tighten screw in hole E all the way.

Template to scale 1 : 1, full size.

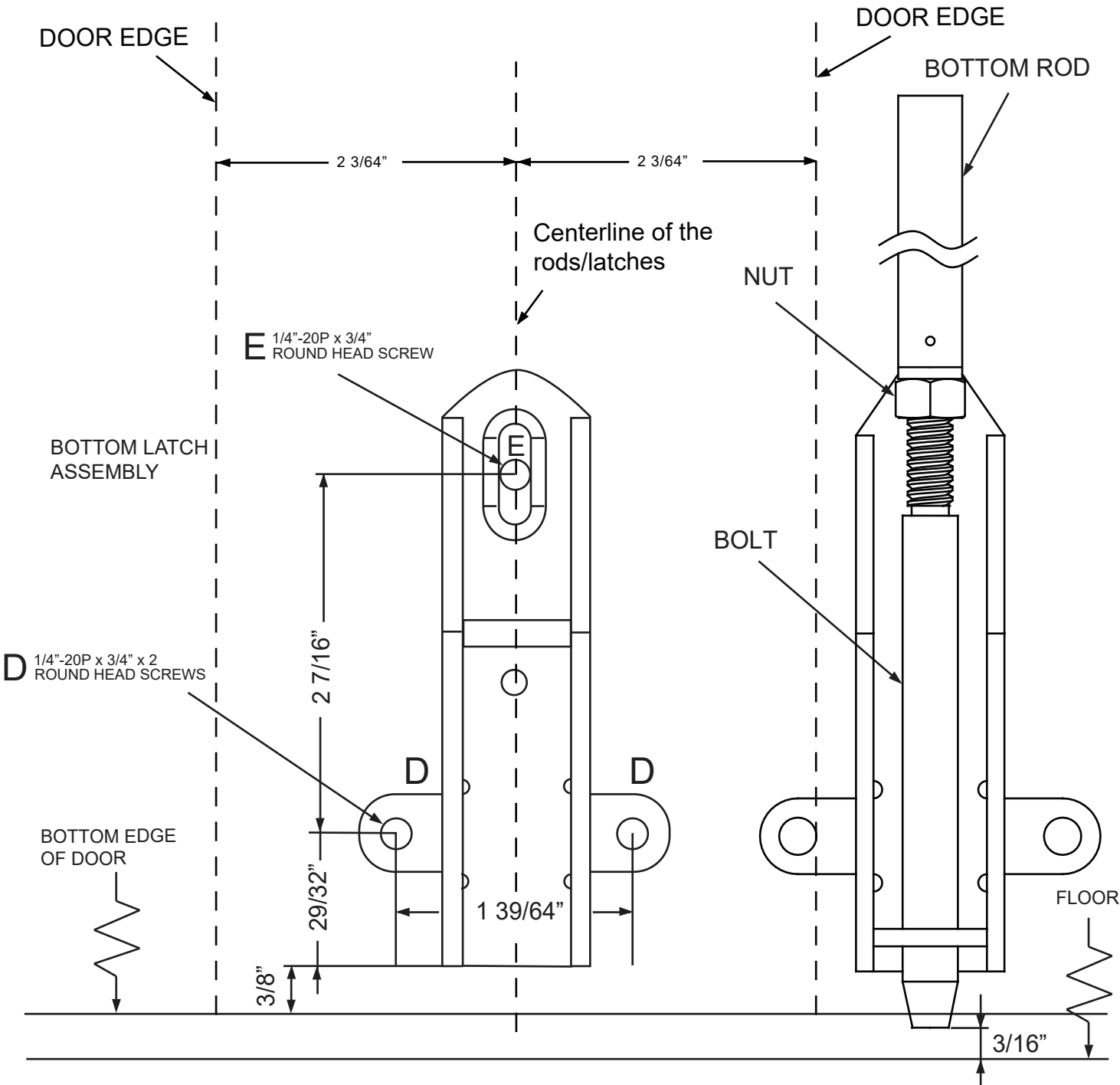
# TEMPLATE (B-2)

(A) For 2000V Series (UL Listed)-Drill & tap for (3) 1/4"-20P x 3/4" machine screws (2xD,E) for latches. Drill (3) 3/16" pilot holes (2xD,E) for self-tapping machine screws or wood screws for latches.

(B) For F2000V (Fire Rated)-Drill 9/32" holes (2xD,E) inside and 3/8" holes (2xD,E) outside for the (3) thru bolts.

Note : When installing top latch assembly :

1. Drill (1) E hole and install screw but do not tighten all the way.
2. Drill (2) D holes and install and tighten screws.
3. Tighten screw in hole E all the way.



Template to scale 1 : 1, full size.

Always consult dormakaba's website for the latest instructions at [designhardware.net](http://designhardware.net) or call 1-800-392-5209.