

UL-AFB-W UL Auto Flush Bolts (Wooden Doors) Installation Instructions

Template NO:
17224

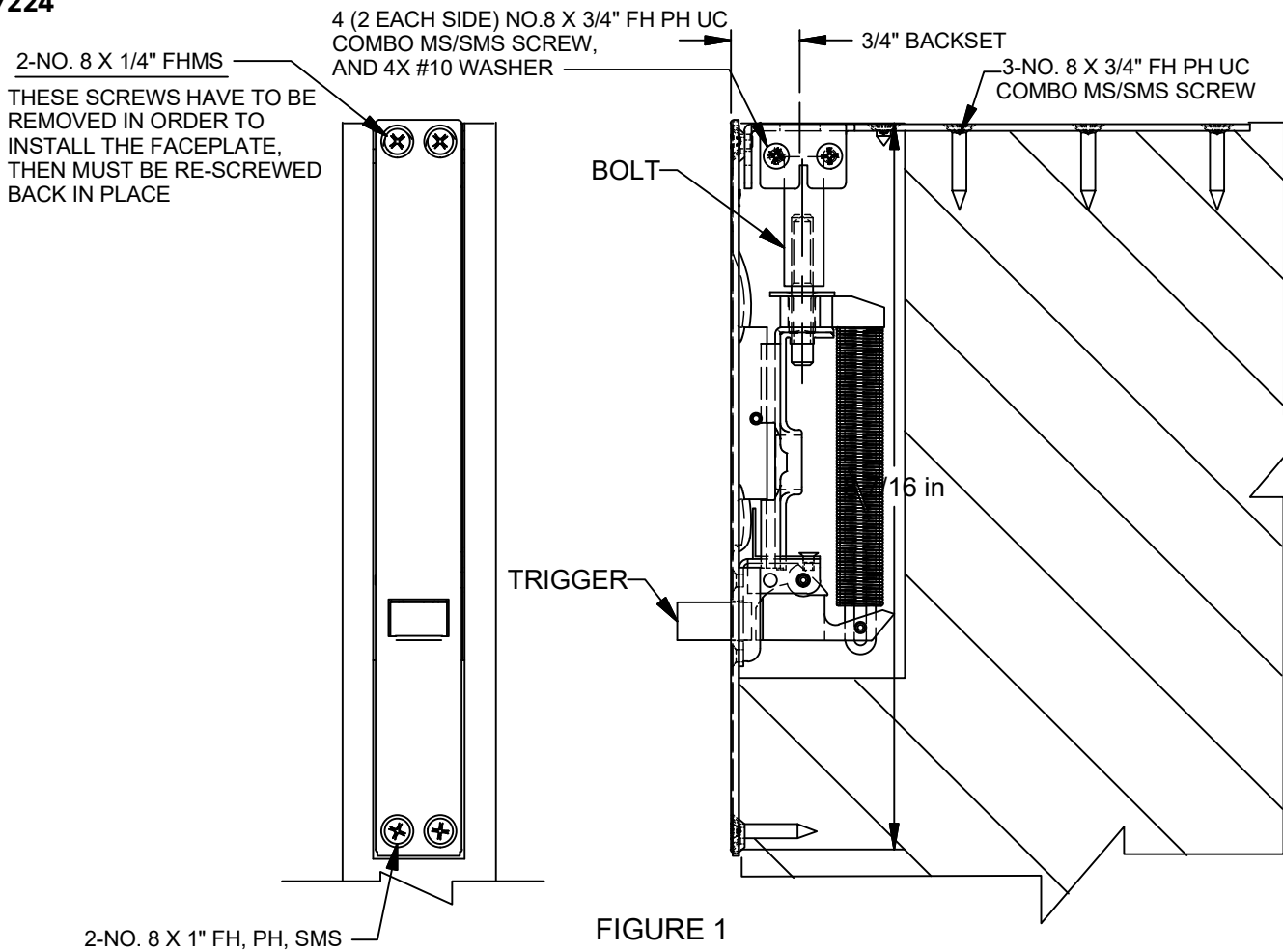


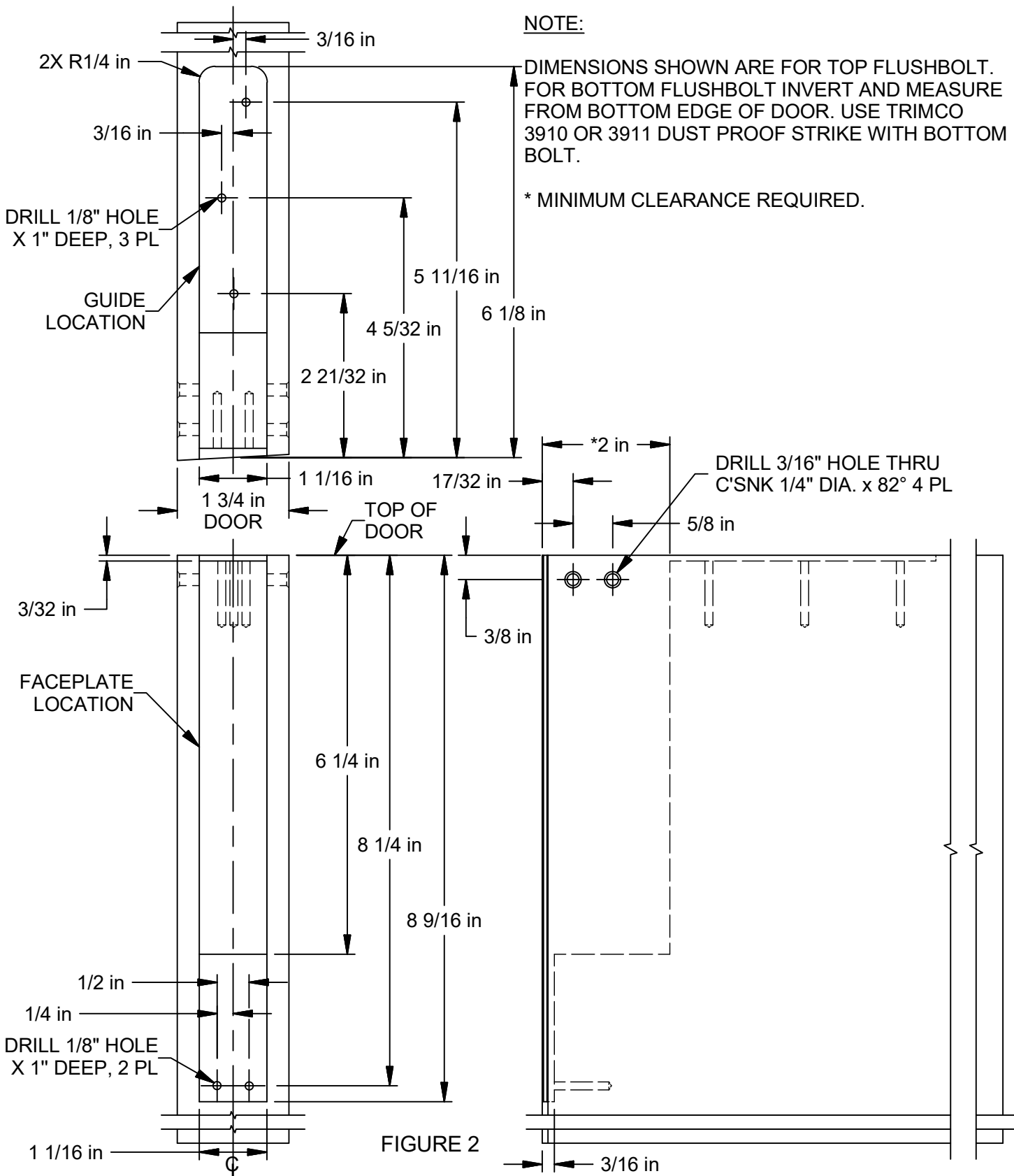
FIGURE 1

INSTALLATION INSTRUCTIONS

- 1) PREPARE INACTIVE DOOR AS SHOWN IN FIGURE 2. SEAL DOOR IMMEDIATELY. (TOP CORNER SHOWN)
- 2) PREPARE FRAME FOR ANSI A115.4 STRIKE AS IN FIGURE 3. LOCATE STRIKE TO LINE UP WITH BOLT.
- 3) INSTALL TRIMCO 3910 OR 3911 DUST PROOF STRIKE IN FLOOR (TEMPLATE AVAILABLE), OR ANSI A115.4 STRIKE SHOWN IN FIGURE 3. LOCATE STRIKE TO LINE UP WITH BOLT. INSTALL STRIKE.
- 4) INSTALL TRIMCO 3815L AS SHOWN IN FIGURE 1.
- 5) HANG DOOR.
- 6) ADJUST BOLT SO WHEN FULLY RETRACTED TO PROVIDE 1/8" CLEARANCE BETWEEN BOLT AND STRIKE. TO ADJUST BOLT REMOVE SCREWS UNDERLINED IN FIGURE 1 AND REMOVE BOLT. ROTATE BOLT UP OR DOWN AS REQUIRED, THEN REPLACE BOLT.
- 7) PREPARE ACTIVE DOOR AS SHOWN IN FIGURE 4. TRIGGER STRIKE TO LINE UP WITH CENTERLINE OF TRIGGER AS SHOWN IN FIGURE 4. INSTALL STRIKE USING 2-NO. 8 X 1" SMS. SHIM AS REQUIRED TO PROVIDE 3/32 CLEARANCE BETWEEN INACTIVE DOOR AND TRIGGER STRIKE.

NOTE: FAILURE TO PRE-DRILL SCREW HOLES WILL VOID WARRANTY.

Not to scale 1:1. Measurements are for reference only. Not a drilling template.



Not to scale 1:1. Measurements are for reference only. Not a drilling template.

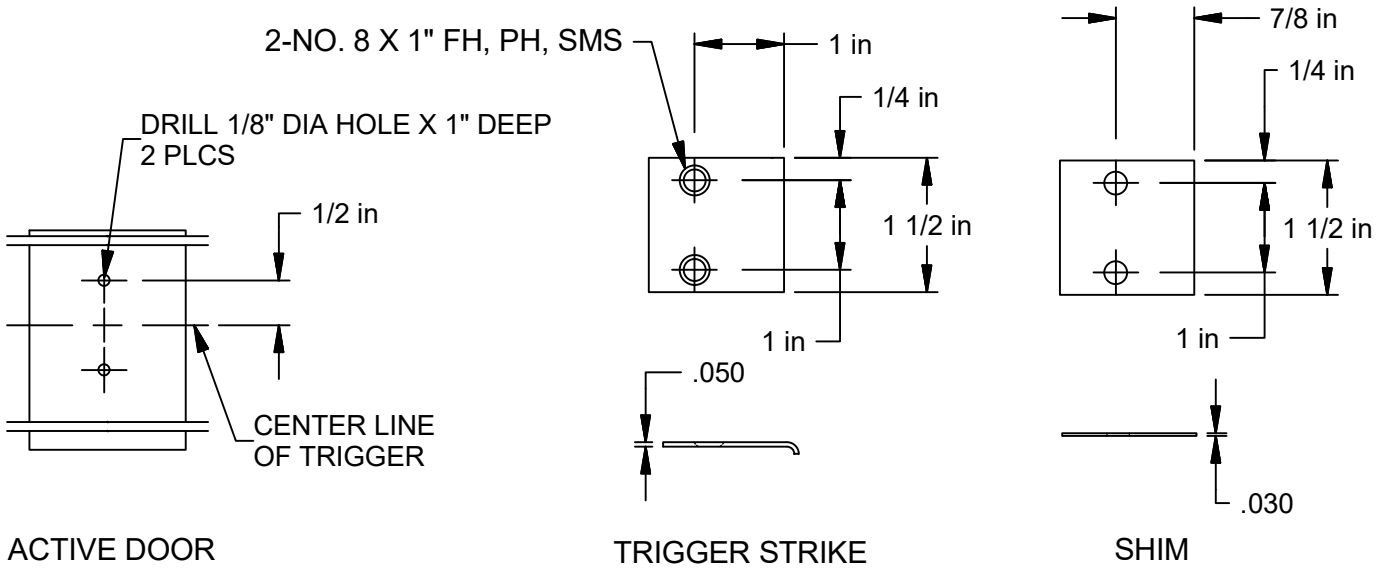
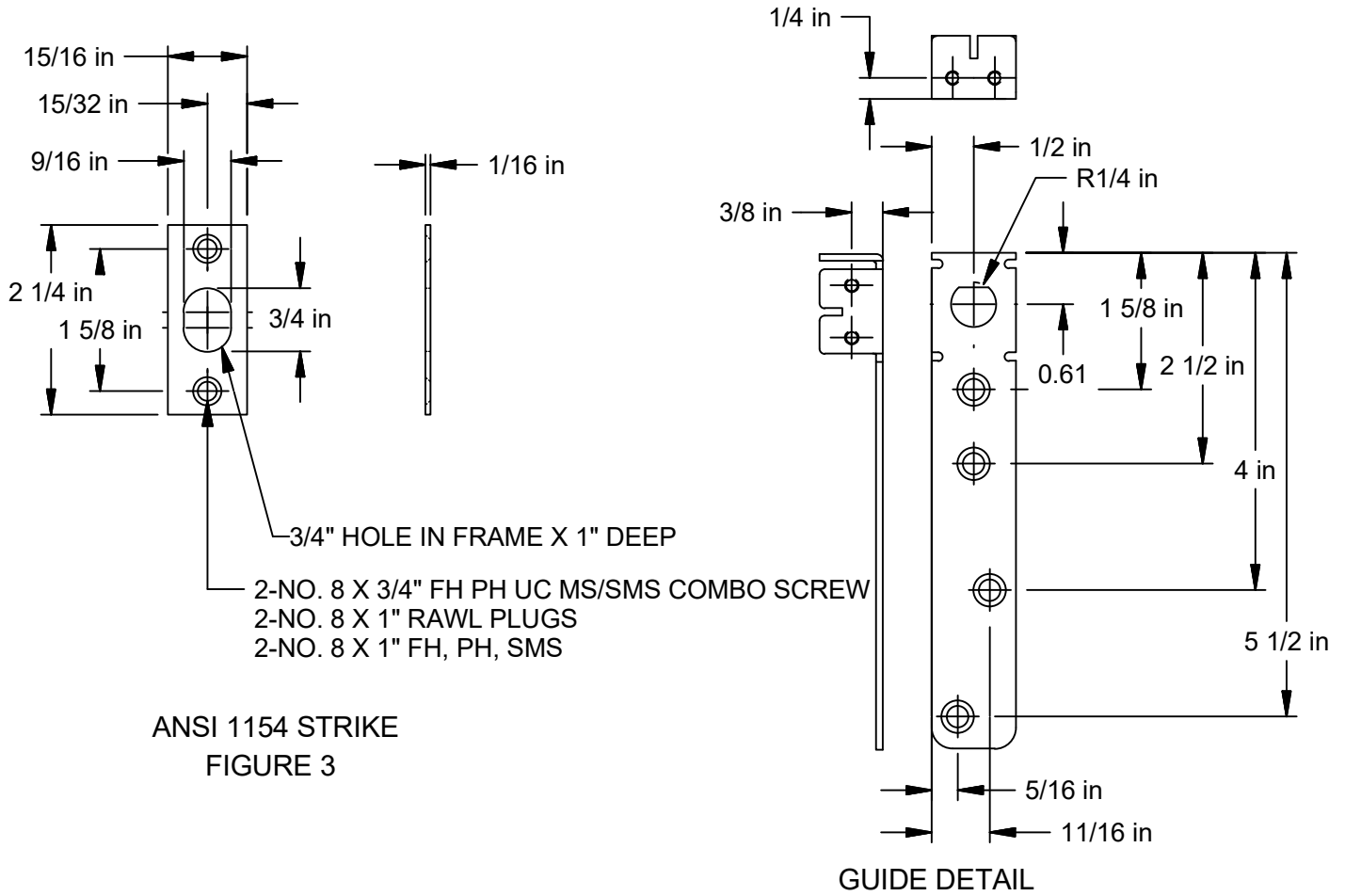


FIGURE 4

Not to scale 1:1. Measurements are for reference only. Not a drilling template.