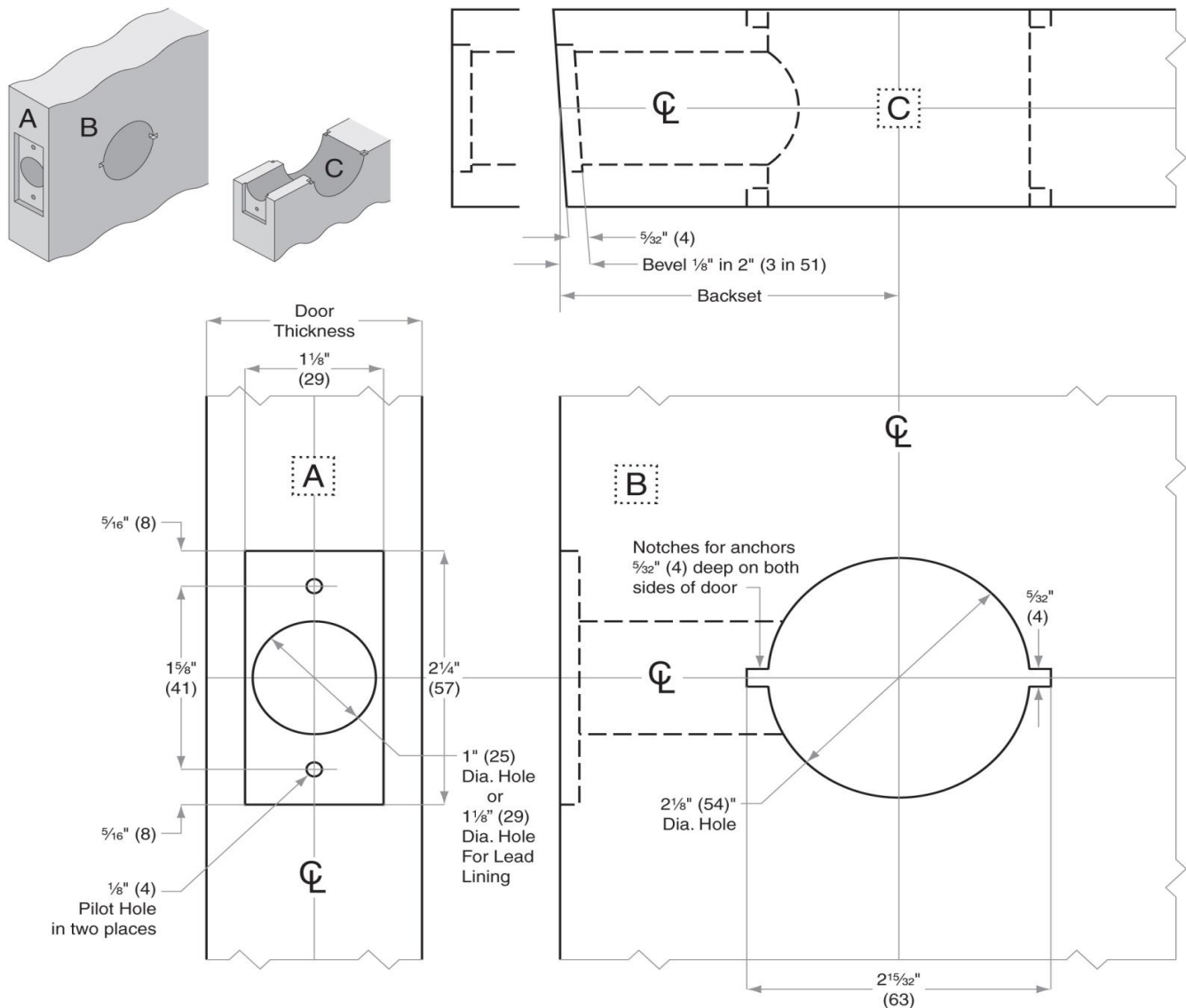


K-2 Series Standard Duty Lock 2 3/4" Backset Template



<p>Template No. K2.234</p>	<p>Design Hardware</p> <p>K2 Series Cylindrical Lockset</p>	<p>Functions 75, 76, 82, 84, 86</p> <p>w/ Std. 2 3/4" Latch</p>
--	---	--

Not to scale 1:1. Measurements are for reference only. Not a drilling template.